



# LABOUR FORCE

AUSTRALIA  
PRELIMINARY

EMBARGO: 11:30AM (CANBERRA TIME) THURS 10 FEB 2000

## JANUARY KEY FIGURES

### TREND

	Dec 1999	Jan 2000	monthly change
Employed persons ('000)	8 901.8	8 914.9	0.1 %
Unemployed persons ('000)	660.9	656.2	-0.7 %
Unemployment rate (%)	6.9	6.9	-0.1 pts
Participation rate (%)	63.3	63.3	0.0 pts

### SEASONALLY ADJUSTED

	Dec 1999	Jan 2000	monthly change
Employed persons ('000)	8 928.4	8 900.9	-27.6
Unemployed persons ('000)	671.1	650.7	-20.5
Unemployment rate (%)	7.0	6.8	-0.2 pts
Participation rate (%)	63.6	63.2	-0.4 pts

## JANUARY KEY POINTS

### TREND ESTIMATES

#### EMPLOYMENT

- has risen strongly for a year, reaching 8,914,900.

#### UNEMPLOYMENT

- has been falling since July 1998 to 656,200.

#### UNEMPLOYMENT RATE

- declined slightly to 6.9%.

#### PARTICIPATION RATE

- remained steady at 63.3%.

### SEASONALLY ADJUSTED ESTIMATES

#### EMPLOYMENT

- decreased by 27,600 to 8,900,900. Full-time employment fell by 39,700 and part-time employment rose by 12,100.

#### UNEMPLOYMENT

- decreased by 20,500 to 650,700. The number of persons looking for full-time work fell by 22,700 and persons looking for part-time work rose by 2,300.

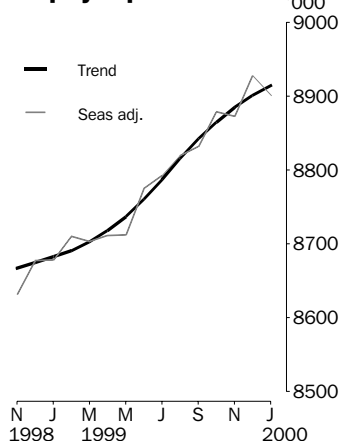
#### UNEMPLOYMENT RATE

- decreased by 0.2 percentage points to 6.8%. The male rate fell by 0.3 percentage points to 6.9% and the female rate fell by 0.1 percentage point to 6.6%.
- NSW 5.9% (6.3% last month); Vic 6.7% (6.9%); Qld 8.0% (8.3%); SA 7.7% (8.0%); WA 6.8% (6.1%); Tas 8.9% (8.8%).

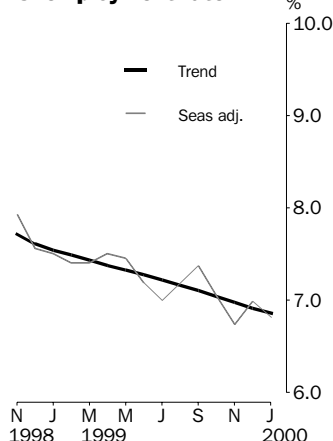
#### PARTICIPATION RATE

- decreased by 0.4 percentage points to 63.2%.

### Employed persons



### Unemployment rate



- For further information about these and related statistics, contact Michael Johnson on 02 6252 6525 or Client Services in any ABS office as shown on the back cover of this publication.

# NOTES

## FORTHCOMING ISSUES

<i>ISSUE</i>	<i>RELEASE DATE</i>
February 2000	09 March 2000
March 2000	06 April 2000
April 2000	11 May 2000
May 2000	08 June 2000
June 2000	13 July 2000
July 2000	10 August 2000



## FORTHCOMING CHANGES

Seasonal factors for the Monthly Labour Force Survey are reviewed each February. Revised seasonally adjusted and trend data to January 2000 and seasonal factors to January 2001 will be available on Thursday 2 March 2000, either through PC-Ausstats or on request as a special data service. The February issue of this publication, due for release on Thursday 9 March 2000, will contain revised seasonally adjusted and trend estimates. For further inquiries, contact Michael Johnson on 02 6252 6525.



## ROUNDING

Estimates of monthly change shown on page 1 have been calculated using unrounded estimates, and may be different from, but are more accurate than, movements obtained from the rounded estimates. The graphs on page 1 also depict movements calculated from unrounded estimates.



## SAMPLING ERRORS

The estimates in this publication are based on a sample survey. Because the entire population is not enumerated, the published estimates and the movements derived from them are subject to sampling variability. Standard errors give a measure of this variability and appear on pages 30 and 31.

The 95% confidence intervals below provide another way of looking at the variability inherent in estimates from sample surveys. The interval bounded by the two limits is the 95% confidence interval. A 95% confidence interval indicates that we are 95% confident that the upper and lower limits enclose the true value of the estimate.

<i>SEASONALLY ADJUSTED DATA SERIES</i>	<i>MOVEMENTS</i>	
	<i>DECEMBER 1999 TO JANUARY 2000</i>	
	<i>Monthly change</i>	<i>95% Confidence interval</i>
Total employment	-27 600	-63 800 to 8 600
Total unemployment	-20 500	-35 100 to -5 900
Unemployment rate	-0.2 pts	-0.4 pts to 0.0 pts
Participation rate	-0.4 pts	-0.6 pts to -0.2 pts

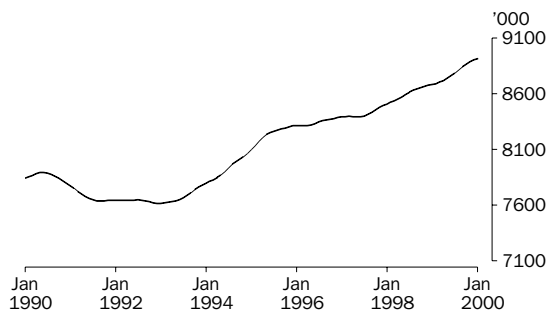


Dennis Trewin  
Acting Australian Statistician

# PRINCIPAL LABOUR FORCE SERIES: Trend estimates

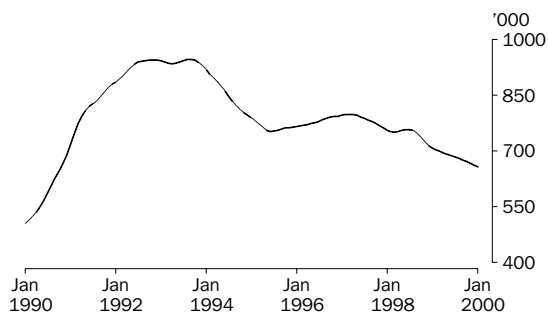
## EMPLOYED PERSONS

The trend estimate of employed persons rose strongly from 7,615,400 in January 1993 until early 1996. The trend then continued to rise at a slower rate until August 1997. Since then, the trend estimate has shown stronger growth, reaching 8,914,900 in January 2000.



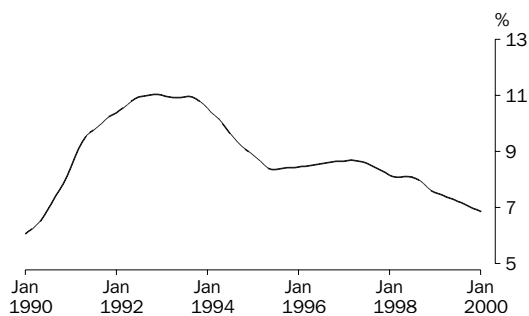
## UNEMPLOYED PERSONS

The trend estimate of unemployed persons peaked at 946,900 in September 1993, before falling rapidly to 752,400 in June 1995. The trend then rose slowly for almost two years, to 798,600 in March 1997. Apart from a small rise in mid 1998, the trend estimate has been falling since March 1997, and was 656,200 in January 2000.



## UNEMPLOYMENT RATE

From a high of 11.0% in August 1993, the trend unemployment rate fell rapidly to 8.4% in May 1995. The trend then rose slowly to 8.7% in March 1997. The trend rate has since fallen, and was 6.9% in January 2000.

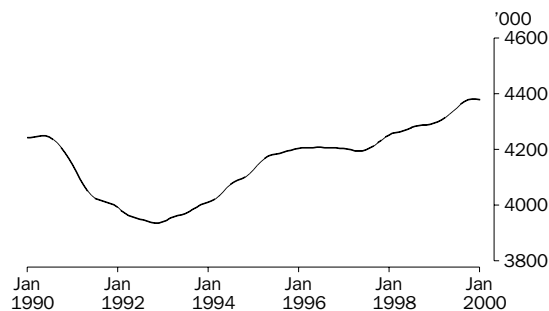


## EMPLOYED PERSONS: Trend estimates

### MALES EMPLOYED FULL TIME

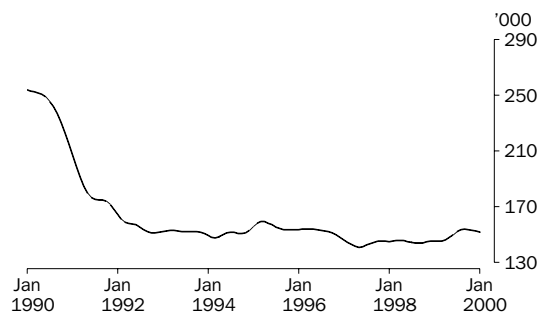
#### TOTAL

From a low of 3,935,300 in December 1992, the trend estimate for male full-time employment rose rapidly at first, then more slowly, to 4,207,100 in July 1996. The trend then fell slightly to 4,193,900 in May 1997 before rising again to 4,380,700 in December 1999. The trend has since fallen slightly to 4,379,000 in January 2000.



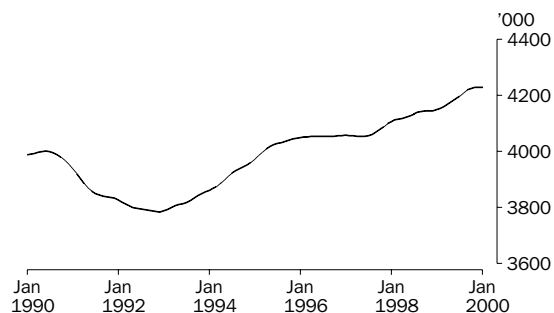
#### MALES AGED 15-19

After declining rapidly in the early 1990s, the trend estimate for male teenage full-time employment has remained relatively steady for the past seven years. In that time, the trend has ranged between 140,800 and 159,200. The trend estimate has declined slightly since September 1999 to stand at 151,600 in January 2000.



#### MALES AGED 20 AND OVER

From a low of 3,783,900 in December 1992, the trend estimate for male adult full-time employment rose to 4,056,900 in January 1997. The trend estimate then dropped slightly before rising to 4,228,300 in December 1999. The trend has declined marginally to 4,227,400 in January 2000.

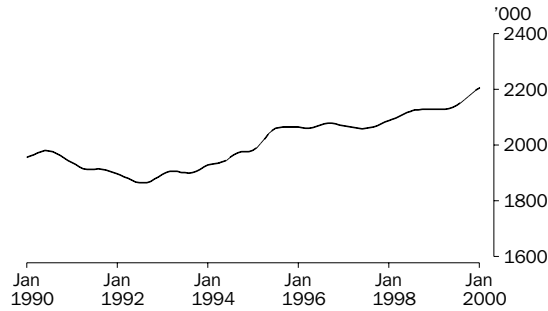


# EMPLOYED PERSONS: Trend estimates

## FEMALES EMPLOYED FULL TIME

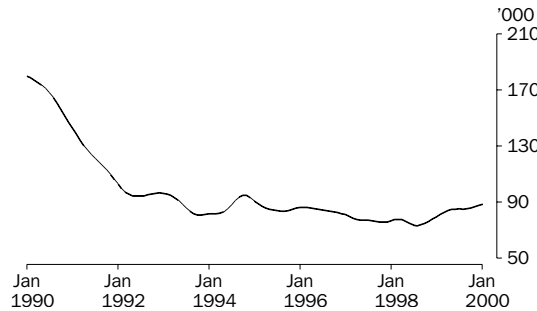
### TOTAL

The trend estimate for female full-time employment increased overall from a low of 1,863,700 in August 1992 to 2,078,700 in September 1996. After falling to 2,059,100 in June 1997, the trend then rose to 2,206,700 in January 2000, with strong growth in the last eight months.



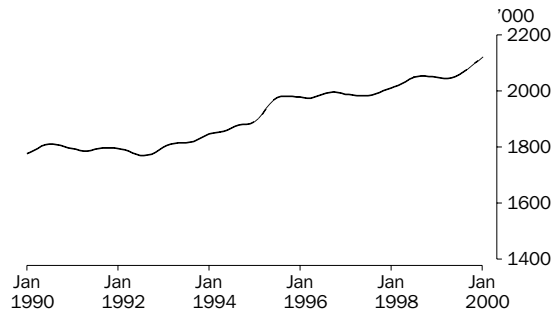
### FEMALES AGED 15-19

The trend estimate for female teenage full-time employment declined rapidly in the early 1990s, to 80,700 in October 1993. The trend then rose to 94,900 in October 1994, before commencing a period of decline, to 73,100 in August 1998. Since then, the trend has been rising to stand at 88,400 in January 2000.



### FEMALES AGED 20 AND OVER

From 1,769,200 in August 1992, the trend estimate for female adult full-time employment has been increasing overall. After remaining relatively flat from mid-1995 to mid-1997, the trend rose to 2,053,300 in September 1998, before falling slightly. Recently the trend has increased sharply to 2,118,300 in January 2000.



## LABOUR FORCE STATUS (AGED 15 AND OVER): Original

Month	EMPLOYED.....			UNEMPLOYED.....			Labour force	Not in labour force	Civilian population aged 15 and over	Unemployment rate	Participation rate
	Full time	Part time	Total	Looking for f/t work	Looking for p/t work	Total					
	'000	'000	'000	'000	'000	'000					
MALES											
<b>1998</b>											
November	4 278.1	611.5	4 889.5	358.5	52.1	410.6	5 300.1	2 009.1	7 309.2	7.7	72.5
December	4 343.3	622.0	4 965.4	354.7	57.7	412.3	5 377.7	1 941.6	7 319.3	7.7	73.5
<b>1999</b>											
January	4 282.3	600.4	4 882.6	389.5	57.8	447.3	5 329.9	1 998.8	7 328.7	8.4	72.7
February	4 318.0	598.3	4 916.3	381.0	63.1	444.0	5 360.3	1 977.7	7 338.0	8.3	73.0
March	4 312.1	634.3	4 946.4	335.8	69.6	405.4	5 351.8	1 995.6	7 347.4	7.6	72.8
April	4 299.2	640.7	4 939.9	337.3	64.9	402.2	5 342.1	2 015.0	7 357.2	7.5	72.6
May	4 290.9	641.8	4 932.7	332.3	65.4	397.7	5 330.4	2 036.6	7 367.0	7.5	72.4
June	4 316.8	660.8	4 977.6	321.9	49.8	371.7	5 349.4	2 027.4	7 376.8	6.9	72.5
July	4 373.7	618.8	4 992.4	302.2	57.2	359.4	5 351.8	2 034.2	7 386.0	6.7	72.5
August	4 323.8	620.8	4 944.5	316.4	66.4	382.9	5 327.4	2 067.9	7 395.3	7.2	72.0
September	4 387.7	622.0	5 009.7	331.3	72.5	403.8	5 413.6	1 991.1	7 404.6	7.5	73.1
October	4 376.4	623.0	4 999.4	307.2	61.4	368.6	5 368.1	2 048.0	7 416.0	6.9	72.4
November	4 378.8	608.7	4 987.5	301.3	48.9	350.3	5 337.8	2 089.6	7 427.4	6.6	71.9
December	4 462.2	617.4	5 079.6	322.0	65.7	387.7	5 467.3	1 971.5	7 438.7	7.1	73.5
<b>2000</b>											
January	4 367.2	611.0	4 978.2	344.6	62.5	407.1	5 385.3	2 062.7	7 448.0	7.6	72.3
FEMALES											
<b>1998</b>											
November	2 112.7	1 648.7	3 761.4	189.7	106.5	296.2	4 057.6	3 484.0	7 541.6	7.3	53.8
December	2 190.0	1 635.9	3 826.0	194.9	97.0	291.9	4 117.9	3 433.2	7 551.1	7.1	54.5
<b>1999</b>											
January	2 139.8	1 530.6	3 670.4	210.1	97.1	307.2	3 977.6	3 582.5	7 560.1	7.7	52.6
February	2 126.0	1 606.4	3 732.4	213.0	123.8	336.8	4 069.2	3 499.8	7 569.1	8.3	53.8
March	2 103.2	1 647.7	3 750.9	198.8	132.2	331.1	4 082.0	3 496.1	7 578.1	8.1	53.9
April	2 110.0	1 663.7	3 773.7	190.2	112.7	302.9	4 076.7	3 510.5	7 587.2	7.4	53.7
May	2 108.5	1 675.4	3 783.8	181.0	110.2	291.1	4 074.9	3 521.3	7 596.3	7.1	53.6
June	2 132.5	1 683.5	3 816.0	175.8	100.9	276.7	4 092.7	3 512.7	7 605.4	6.8	53.8
July	2 172.6	1 659.4	3 832.0	160.4	104.2	264.6	4 096.6	3 517.9	7 614.5	6.5	53.8
August	2 109.6	1 677.5	3 787.1	166.8	103.1	269.9	4 057.0	3 566.6	7 623.6	6.7	53.2
September	2 165.0	1 733.2	3 898.2	187.7	121.8	309.5	4 207.7	3 425.1	7 632.7	7.4	55.1
October	2 190.8	1 698.9	3 889.7	173.9	100.4	274.4	4 164.1	3 479.1	7 643.2	6.6	54.5
November	2 178.0	1 727.3	3 905.3	167.5	92.1	259.6	4 164.9	3 488.7	7 653.7	6.2	54.4
December	2 263.8	1 703.4	3 967.2	184.7	94.8	279.5	4 246.7	3 417.4	7 664.1	6.6	55.4
<b>2000</b>											
January	2 208.0	1 587.8	3 795.8	188.5	100.7	289.2	4 085.0	3 587.3	7 672.3	7.1	53.2
PERSONS											
<b>1998</b>											
November	6 390.8	2 260.2	8 651.0	548.1	158.6	706.7	9 357.7	5 493.0	14 850.7	7.6	63.0
December	6 533.4	2 258.0	8 791.3	549.5	154.7	704.3	9 495.6	5 374.8	14 870.4	7.4	63.9
<b>1999</b>											
January	6 422.1	2 131.0	8 553.0	599.7	154.8	754.5	9 307.5	5 581.2	14 888.8	8.1	62.5
February	6 444.0	2 204.7	8 648.7	594.0	186.9	780.9	9 429.6	5 477.5	14 907.1	8.3	63.3
March	6 415.4	2 282.0	8 697.3	534.6	201.8	736.4	9 433.8	5 491.7	14 925.5	7.8	63.2
April	6 409.2	2 304.4	8 713.6	527.5	177.7	705.2	9 418.8	5 525.5	14 944.3	7.5	63.0
May	6 399.3	2 317.2	8 716.5	513.2	175.5	688.8	9 405.3	5 557.9	14 963.2	7.3	62.9
June	6 449.3	2 344.3	8 793.6	497.8	150.7	648.5	9 442.1	5 540.1	14 982.1	6.9	63.0
July	6 546.3	2 278.1	8 824.4	462.6	161.4	624.0	9 448.4	5 552.1	15 000.5	6.6	63.0
August	6 433.4	2 298.2	8 731.6	483.2	169.6	652.8	9 384.4	5 634.5	15 018.9	7.0	62.5
September	6 552.7	2 355.2	8 908.0	519.0	194.3	713.3	9 621.2	5 416.1	15 037.4	7.4	64.0
October	6 567.2	2 321.9	8 889.2	481.1	161.9	643.0	9 532.2	5 527.0	15 059.2	6.7	63.3
November	6 556.8	2 336.0	8 892.8	468.8	141.1	609.9	9 502.7	5 578.3	15 081.0	6.4	63.0
December	6 726.0	2 320.8	9 046.8	506.7	160.5	667.2	9 714.0	5 388.9	15 102.9	6.9	64.3
<b>2000</b>											
January	6 575.2	2 198.8	8 773.9	533.2	163.2	696.3	9 470.3	5 650.0	15 120.3	7.4	62.6

LABOUR FORCE STATUS (AGED 15 AND OVER): **Seasonally adjusted**

Month	EMPLOYED.....			UNEMPLOYED.....			Labour force '000	Unemp- loyment rate %	Partic- ipation rate %
	Full time '000	Part time '000	Total '000	Looking for f/t work '000	Looking for p/t work '000	Total '000			
<b>MALES</b>									
<b>1998</b>									
November	4 283.8	611.2	4 894.9	370.6	57.4	428.0	5 323.0	8.0	72.8
December	4 278.3	622.0	4 900.3	360.5	54.4	414.9	5 315.2	7.8	72.6
<b>1999</b>									
January	4 275.3	632.2	4 907.6	356.3	53.5	409.8	5 317.4	7.7	72.6
February	4 310.7	627.0	4 937.7	349.5	57.0	406.5	5 344.2	7.6	72.8
March	4 329.8	626.0	4 955.8	328.6	60.7	389.2	5 345.0	7.3	72.7
April	4 313.9	631.0	4 944.9	346.1	63.0	409.2	5 354.1	7.6	72.8
May	4 305.3	631.9	4 937.2	336.6	68.1	404.7	5 341.8	7.6	72.5
June	4 332.0	641.3	4 973.3	330.9	55.5	386.4	5 359.7	7.2	72.7
July	4 350.9	628.9	4 979.8	311.1	64.5	375.6	5 355.4	7.0	72.5
August	4 376.4	615.4	4 991.9	321.3	74.4	395.8	5 387.7	7.3	72.9
September	4 377.7	608.3	4 986.0	328.4	67.3	395.6	5 381.6	7.4	72.7
October	4 369.5	620.0	4 989.5	325.1	64.4	389.4	5 379.0	7.2	72.5
November	4 384.6	607.9	4 992.5	311.7	53.8	365.6	5 358.1	6.8	72.1
December	4 395.1	617.3	5 012.4	327.2	62.0	389.1	5 401.6	7.2	72.6
<b>2000</b>									
January	4 358.4	643.4	5 001.9	314.9	58.1	373.0	5 374.8	6.9	72.2
<b>FEMALES</b>									
<b>1998</b>									
November	2 108.5	1 628.4	3 736.9	200.8	113.8	314.6	4 051.5	7.8	53.7
December	2 139.2	1 638.1	3 777.4	194.8	100.1	294.9	4 072.3	7.2	53.9
<b>1999</b>									
January	2 139.4	1 630.7	3 770.1	193.7	100.4	294.1	4 064.2	7.2	53.8
February	2 133.9	1 639.0	3 772.8	183.9	106.2	290.1	4 062.9	7.1	53.7
March	2 115.2	1 632.2	3 747.4	189.7	116.5	306.2	4 053.6	7.6	53.5
April	2 121.9	1 644.4	3 766.2	190.2	107.7	297.9	4 064.1	7.3	53.6
May	2 124.0	1 651.1	3 775.0	184.0	113.4	297.3	4 072.4	7.3	53.6
June	2 155.3	1 646.0	3 801.3	184.5	108.7	293.2	4 094.5	7.2	53.8
July	2 143.6	1 669.0	3 812.6	171.0	114.4	285.4	4 098.1	7.0	53.8
August	2 143.8	1 683.2	3 827.0	175.7	111.0	286.8	4 113.7	7.0	54.0
September	2 150.5	1 694.9	3 845.5	191.5	115.8	307.3	4 152.7	7.4	54.4
October	2 186.9	1 702.4	3 889.3	182.8	101.4	284.2	4 173.4	6.8	54.6
November	2 174.4	1 705.6	3 880.1	177.3	98.6	275.9	4 155.9	6.6	54.3
December	2 210.2	1 705.8	3 916.0	184.2	97.8	282.0	4 198.0	6.7	54.8
<b>2000</b>									
January	2 207.2	1 691.8	3 899.0	173.8	104.0	277.7	4 176.7	6.6	54.4
<b>PERSONS</b>									
<b>1998</b>									
November	6 392.3	2 239.6	8 631.9	571.4	171.2	742.6	9 374.5	7.9	63.1
December	6 417.5	2 260.1	8 677.7	555.3	154.5	709.8	9 387.5	7.6	63.1
<b>1999</b>									
January	6 414.7	2 262.9	8 677.7	550.0	153.9	703.9	9 381.6	7.5	63.0
February	6 444.6	2 266.0	8 710.6	533.4	163.2	696.5	9 407.1	7.4	63.1
March	6 445.0	2 258.2	8 703.2	518.3	177.2	695.5	9 398.7	7.4	63.0
April	6 435.8	2 275.4	8 711.1	536.3	170.8	707.0	9 418.2	7.5	63.0
May	6 429.3	2 282.9	8 712.2	520.6	181.4	702.0	9 414.2	7.5	62.9
June	6 487.3	2 287.3	8 774.6	515.4	164.2	679.6	9 454.2	7.2	63.1
July	6 494.5	2 298.0	8 792.4	482.1	179.0	661.1	9 453.5	7.0	63.0
August	6 520.2	2 298.6	8 818.8	497.1	185.5	682.6	9 501.4	7.2	63.3
September	6 528.2	2 303.2	8 831.4	519.9	183.1	702.9	9 534.4	7.4	63.4
October	6 556.4	2 322.4	8 878.8	507.9	165.7	673.6	9 552.4	7.1	63.4
November	6 559.0	2 313.6	8 872.6	489.0	152.4	641.4	9 514.0	6.7	63.1
December	6 605.3	2 323.1	8 928.4	511.4	159.8	671.1	9 599.6	7.0	63.6
<b>2000</b>									
January	6 565.6	2 335.2	8 900.9	488.6	162.1	650.7	9 551.6	6.8	63.2

## LABOUR FORCE STATUS (AGED 15 AND OVER): Trend(a)

Month	EMPLOYED.....			UNEMPLOYED.....			Labour force '000	Unemp- loyment rate %	Partic- ipation rate %
	Full time '000	Part time '000	Total '000	Looking for f/t work '000	Looking for p/t work '000	Total '000			
MALES									
<b>1998</b>									
November	4 288.5	612.3	4 900.8	365.8	55.8	421.7	5 322.5	7.9	72.8
December	4 290.2	619.9	4 910.1	359.2	55.5	414.8	5 324.8	7.8	72.8
<b>1999</b>									
January	4 293.7	625.4	4 919.1	353.5	56.2	409.8	5 328.9	7.7	72.7
February	4 299.2	629.0	4 928.2	348.2	57.6	405.8	5 334.0	7.6	72.7
March	4 306.6	631.6	4 938.1	342.6	59.4	402.0	5 340.1	7.5	72.7
April	4 315.9	632.9	4 948.7	336.9	61.2	398.1	5 346.8	7.4	72.7
May	4 326.0	632.5	4 958.5	331.8	63.3	395.1	5 353.7	7.4	72.7
June	4 337.0	630.2	4 967.1	327.7	65.1	392.9	5 360.0	7.3	72.7
July	4 349.6	625.7	4 975.2	324.6	66.2	390.7	5 366.0	7.3	72.7
August	4 362.3	620.5	4 982.7	322.6	66.2	388.7	5 371.5	7.2	72.6
September	4 372.7	616.6	4 989.3	321.4	65.2	386.6	5 375.9	7.2	72.6
October	4 378.5	615.5	4 994.0	321.1	63.6	384.7	5 378.7	7.2	72.5
November	4 380.6	617.2	4 997.9	320.7	61.7	382.3	5 380.2	7.1	72.4
December	4 380.7	620.5	5 001.2	320.0	59.9	379.9	5 381.1	7.1	72.4
<b>2000</b>									
January	4 379.0	625.3	5 004.3	319.8	57.7	377.5	5 381.8	7.0	72.3
FEMALES									
<b>1998</b>									
November	2 128.4	1 637.3	3 765.7	197.6	105.5	303.0	4 068.7	7.4	54.0
December	2 128.0	1 636.6	3 764.6	194.4	105.5	299.9	4 064.5	7.4	53.8
<b>1999</b>									
January	2 127.6	1 635.4	3 763.1	192.0	106.2	298.2	4 061.2	7.3	53.7
February	2 127.5	1 635.2	3 762.6	190.2	107.2	297.4	4 060.1	7.3	53.6
March	2 127.7	1 636.9	3 764.6	188.2	108.6	296.8	4 061.4	7.3	53.6
April	2 128.5	1 641.1	3 769.5	185.7	110.4	296.2	4 065.7	7.3	53.6
May	2 130.9	1 648.0	3 779.0	183.3	112.1	295.5	4 074.4	7.3	53.6
June	2 135.7	1 657.3	3 793.0	181.6	113.0	294.6	4 087.6	7.2	53.7
July	2 142.9	1 669.0	3 811.9	180.7	112.4	293.0	4 105.0	7.1	53.9
August	2 152.0	1 680.8	3 832.7	180.6	110.7	291.2	4 124.0	7.1	54.1
September	2 162.1	1 690.7	3 852.8	181.0	108.3	289.3	4 142.1	7.0	54.3
October	2 173.4	1 697.7	3 871.1	181.4	105.4	286.9	4 158.0	6.9	54.4
November	2 185.2	1 702.0	3 887.3	181.2	102.8	283.9	4 171.2	6.8	54.5
December	2 196.3	1 704.3	3 900.6	180.4	100.7	281.1	4 181.6	6.7	54.6
<b>2000</b>									
January	2 206.7	1 704.0	3 910.7	179.7	98.9	278.7	4 189.4	6.7	54.6
PERSONS									
<b>1998</b>									
November	6 416.9	2 249.6	8 666.5	563.4	161.3	724.7	9 391.2	7.7	63.2
December	6 418.2	2 256.5	8 674.6	553.6	161.0	714.7	9 389.3	7.6	63.1
<b>1999</b>									
January	6 421.4	2 260.8	8 682.2	545.5	162.4	707.9	9 390.1	7.5	63.1
February	6 426.6	2 264.2	8 690.8	538.4	164.9	703.3	9 394.1	7.5	63.0
March	6 434.3	2 268.5	8 702.8	530.8	168.0	698.8	9 401.6	7.4	63.0
April	6 444.3	2 273.9	8 718.3	522.6	171.7	694.3	9 412.5	7.4	63.0
May	6 457.0	2 280.5	8 737.5	515.1	175.5	690.6	9 428.1	7.3	63.0
June	6 472.6	2 287.5	8 760.1	509.3	178.1	687.4	9 447.6	7.3	63.1
July	6 492.5	2 294.6	8 787.1	505.2	178.5	683.8	9 470.9	7.2	63.1
August	6 514.2	2 301.3	8 815.5	503.1	176.8	679.9	9 495.4	7.2	63.2
September	6 534.8	2 307.3	8 842.1	502.4	173.5	675.9	9 518.0	7.1	63.3
October	6 551.8	2 313.3	8 865.1	502.5	169.1	671.5	9 536.6	7.0	63.3
November	6 565.9	2 319.3	8 885.1	501.8	164.4	666.3	9 551.4	7.0	63.3
December	6 577.0	2 324.8	8 901.8	500.4	160.6	660.9	9 562.7	6.9	63.3
<b>2000</b>									
January	6 585.7	2 329.3	8 914.9	499.5	156.7	656.2	9 571.2	6.9	63.3

(a) Trend estimates for July 1999 to December 1999 have been revised.



## UNEMPLOYED PERSONS: Original

Month	NUMBER OF UNEMPLOYED PERSONS.....					UNEMPLOYMENT RATE.....					UNEMPLOYMENT TO POPULATION RATIO	
	Aged 15-19 looking for f/t work	Aged 20 and over looking for f/t work	Total looking for f/t work	Looking for p/t work	Total	Aged 15-19 looking for f/t work	Aged 20 and over looking for f/t work	Total looking for f/t work	Looking for p/t work	Total	Aged 15-19 looking for f/t work	Aged 20 and over looking for f/t work
	'000	'000	'000	'000	'000	%	%	%	%	%	%	%
MALES												
<b>1998</b>												
November	42.6	315.9	358.5	52.1	410.6	23.7	7.1	7.7	7.8	7.7	6.3	4.8
December	52.6	302.0	354.7	57.7	412.3	24.8	6.7	7.5	8.5	7.7	7.8	4.5
<b>1999</b>												
January	52.7	336.8	389.5	57.8	447.3	25.2	7.5	8.3	8.8	8.4	7.8	5.1
February	44.4	336.6	381.0	63.1	444.0	21.9	7.5	8.1	9.5	8.3	6.5	5.1
March	42.5	293.2	335.8	69.6	405.4	22.9	6.6	7.2	9.9	7.6	6.3	4.4
April	40.8	296.5	337.3	64.9	402.2	21.8	6.7	7.3	9.2	7.5	6.0	4.4
May	38.1	294.2	332.3	65.4	397.7	21.3	6.6	7.2	9.2	7.5	5.6	4.4
June	39.1	282.9	321.9	49.8	371.7	22.1	6.3	6.9	7.0	6.9	5.7	4.2
July	32.8	269.4	302.2	57.2	359.4	17.3	6.0	6.5	8.5	6.7	4.8	4.0
August	32.2	284.2	316.4	66.4	382.9	18.3	6.4	6.8	9.7	7.2	4.7	4.2
September	35.1	296.2	331.3	72.5	403.8	18.7	6.5	7.0	10.4	7.5	5.1	4.4
October	33.8	273.4	307.2	61.4	368.6	18.5	6.1	6.6	9.0	6.9	4.9	4.1
November	38.6	262.7	301.3	48.9	350.3	21.1	5.8	6.4	7.4	6.6	5.6	3.9
December	50.1	271.9	322.0	65.7	387.7	23.2	6.0	6.7	9.6	7.1	7.3	4.0
<b>2000</b>												
January	51.0	293.6	344.6	62.5	407.1	23.4	6.5	7.3	9.3	7.6	7.4	4.3
FEMALES												
<b>1998</b>												
November	30.9	158.8	189.7	106.5	296.2	29.8	7.2	8.2	6.1	7.3	4.8	2.3
December	37.2	157.7	194.9	97.0	291.9	29.4	7.0	8.2	5.6	7.1	5.8	2.3
<b>1999</b>												
January	36.3	173.9	210.1	97.1	307.2	27.7	7.8	8.9	6.0	7.7	5.6	2.5
February	35.1	177.8	213.0	123.8	336.8	30.2	8.0	9.1	7.2	8.3	5.4	2.6
March	29.6	169.2	198.8	132.2	331.1	27.7	7.7	8.6	7.4	8.1	4.6	2.4
April	30.4	159.8	190.2	112.7	302.9	26.7	7.3	8.3	6.3	7.4	4.7	2.3
May	31.3	149.6	181.0	110.2	291.1	28.6	6.9	7.9	6.2	7.1	4.8	2.2
June	26.2	149.6	175.8	100.9	276.7	24.6	6.8	7.6	5.7	6.8	4.0	2.2
July	25.6	134.8	160.4	104.2	264.6	22.3	6.1	6.9	5.9	6.5	3.9	1.9
August	26.4	140.4	166.8	103.1	269.9	25.4	6.5	7.3	5.8	6.7	4.1	2.0
September	28.7	159.0	187.7	121.8	309.5	26.1	7.1	8.0	6.6	7.4	4.4	2.3
October	26.7	147.2	173.9	100.4	274.4	24.1	6.5	7.4	5.6	6.6	4.1	2.1
November	29.2	138.3	167.5	92.1	259.6	25.7	6.2	7.1	5.1	6.2	4.5	2.0
December	37.8	146.9	184.7	94.8	279.5	27.7	6.4	7.5	5.3	6.6	5.8	2.1
<b>2000</b>												
January	32.7	155.8	188.5	100.7	289.2	24.3	6.9	7.9	6.0	7.1	5.0	2.2
PERSONS												
<b>1998</b>												
November	73.5	474.6	548.1	158.6	706.7	25.9	7.1	7.9	6.6	7.6	5.6	3.5
December	89.8	459.7	549.5	154.7	704.3	26.5	6.8	7.8	6.4	7.4	6.8	3.4
<b>1999</b>												
January	89.0	510.6	599.7	154.8	754.5	26.2	7.6	8.5	6.8	8.1	6.7	3.8
February	79.6	514.4	594.0	186.9	780.9	24.9	7.7	8.4	7.8	8.3	6.0	3.8
March	72.2	462.4	534.6	201.8	736.4	24.7	6.9	7.7	8.1	7.8	5.4	3.4
April	71.2	456.3	527.5	177.7	705.2	23.6	6.9	7.6	7.2	7.5	5.4	3.4
May	69.5	443.8	513.2	175.5	688.8	24.0	6.7	7.4	7.0	7.3	5.2	3.3
June	65.3	432.5	497.8	150.7	648.5	23.0	6.5	7.2	6.0	6.9	4.9	3.2
July	58.4	404.2	462.6	161.4	624.0	19.2	6.0	6.6	6.6	6.6	4.4	3.0
August	58.7	424.6	483.2	169.6	652.8	20.9	6.4	7.0	6.9	7.0	4.4	3.1
September	63.8	455.2	519.0	194.3	713.3	21.4	6.7	7.3	7.6	7.4	4.8	3.3
October	60.5	420.6	481.1	161.9	643.0	20.6	6.2	6.8	6.5	6.7	4.5	3.1
November	67.8	401.0	468.8	141.1	609.9	22.9	6.0	6.7	5.7	6.4	5.1	2.9
December	87.9	418.8	506.7	160.5	667.2	25.0	6.1	7.0	6.5	6.9	6.6	3.0
<b>2000</b>												
January	83.8	449.4	533.2	163.2	696.3	23.7	6.7	7.5	6.9	7.4	6.2	3.3

## UNEMPLOYED PERSONS: Seasonally adjusted

Month	NUMBER OF UNEMPLOYED PERSONS....					UNEMPLOYMENT RATE.....					UNEMPLOYMENT TO POPULATION RATIO	
	Aged 15-19 looking for f/t work	Aged 20 and over looking for f/t work	Total looking for f/t work	Looking for p/t work	Total	Aged 15-19 looking for f/t work	Aged 20 and over looking for f/t work	Total looking for f/t work	Looking for p/t work	Total	Aged 15-19 looking for f/t work	Aged 20 and over looking for f/t work
	'000	'000	'000	'000	'000	%	%	%	%	%	%	%
MALES												
<b>1998</b>												
November	46.9	323.7	370.6	57.4	428.0	24.4	7.3	8.0	8.6	8.0	6.9	4.9
December	44.5	316.0	360.5	54.4	414.9	23.3	7.1	7.8	8.0	7.8	6.6	4.8
<b>1999</b>												
January	42.7	313.7	356.3	53.5	409.8	23.1	7.1	7.7	7.8	7.7	6.3	4.7
February	39.9	309.6	349.5	57.0	406.5	20.9	6.9	7.5	8.3	7.6	5.9	4.6
March	42.4	286.1	328.6	60.7	389.2	23.1	6.4	7.1	8.8	7.3	6.2	4.3
April	42.7	303.4	346.1	63.0	409.2	22.7	6.8	7.4	9.1	7.6	6.3	4.5
May	37.9	298.7	336.6	68.1	404.7	20.5	6.7	7.3	9.7	7.6	5.6	4.5
June	40.3	290.6	330.9	55.5	386.4	21.4	6.5	7.1	8.0	7.2	5.9	4.3
July	35.0	276.1	311.1	64.5	375.6	18.4	6.2	6.7	9.3	7.0	5.1	4.1
August	36.0	285.4	321.3	74.4	395.8	18.9	6.3	6.8	10.8	7.3	5.3	4.3
September	38.9	289.5	328.4	67.3	395.6	19.8	6.4	7.0	10.0	7.4	5.7	4.3
October	38.1	286.9	325.1	64.4	389.4	20.2	6.4	6.9	9.4	7.2	5.6	4.3
November	42.5	269.2	311.7	53.8	365.6	21.8	6.0	6.6	8.1	6.8	6.2	4.0
December	42.4	284.8	327.2	62.0	389.1	21.8	6.3	6.9	9.1	7.2	6.2	4.2
<b>2000</b>												
January	41.3	273.6	314.9	58.1	373.0	21.4	6.1	6.7	8.3	6.9	6.0	4.0
FEMALES												
<b>1998</b>												
November	32.9	168.0	200.8	113.8	314.6	29.8	7.6	8.7	6.5	7.8	5.1	2.4
December	29.9	164.9	194.8	100.1	294.9	27.2	7.4	8.3	5.8	7.2	4.6	2.4
<b>1999</b>												
January	28.5	165.1	193.7	100.4	294.1	26.0	7.4	8.3	5.8	7.2	4.4	2.4
February	30.1	153.8	183.9	106.2	290.1	28.0	7.0	7.9	6.1	7.1	4.7	2.2
March	28.3	161.4	189.7	116.5	306.2	25.9	7.4	8.2	6.7	7.6	4.4	2.3
April	31.4	158.7	190.2	107.7	297.9	26.5	7.2	8.2	6.1	7.3	4.9	2.3
May	31.9	152.1	184.0	113.4	297.3	27.7	6.9	8.0	6.4	7.3	4.9	2.2
June	29.5	155.0	184.5	108.7	293.2	25.5	7.0	7.9	6.2	7.2	4.5	2.2
July	30.5	140.5	171.0	114.4	285.4	26.2	6.4	7.4	6.4	7.0	4.7	2.0
August	29.8	145.9	175.7	111.0	286.8	26.0	6.6	7.6	6.2	7.0	4.6	2.1
September	32.3	159.2	191.5	115.8	307.3	28.1	7.1	8.2	6.4	7.4	5.0	2.3
October	30.4	152.4	182.8	101.4	284.2	26.6	6.8	7.7	5.6	6.8	4.7	2.2
November	31.0	146.3	177.3	98.6	275.9	25.7	6.6	7.5	5.5	6.6	4.7	2.1
December	30.4	153.8	184.2	97.8	282.0	25.5	6.8	7.7	5.4	6.7	4.6	2.2
<b>2000</b>												
January	25.7	148.0	173.8	104.0	277.7	22.7	6.5	7.3	5.8	6.6	3.9	2.1
PERSONS												
<b>1998</b>												
November	79.8	491.6	571.4	171.2	742.6	26.4	7.4	8.2	7.1	7.9	6.0	3.6
December	74.4	480.9	555.3	154.5	709.8	24.8	7.2	8.0	6.4	7.6	5.6	3.5
<b>1999</b>												
January	71.2	478.8	550.0	153.9	703.9	24.1	7.2	7.9	6.4	7.5	5.4	3.5
February	70.0	463.4	533.4	163.2	696.5	23.5	6.9	7.6	6.7	7.4	5.3	3.4
March	70.7	447.5	518.3	177.2	695.5	24.1	6.7	7.4	7.3	7.4	5.3	3.3
April	74.1	462.2	536.3	170.8	707.0	24.2	6.9	7.7	7.0	7.5	5.6	3.4
May	69.8	450.8	520.6	181.4	702.0	23.3	6.8	7.5	7.4	7.5	5.3	3.3
June	69.9	445.5	515.4	164.2	679.6	23.0	6.7	7.4	6.7	7.2	5.2	3.3
July	65.5	416.6	482.1	179.0	661.1	21.4	6.2	6.9	7.2	7.0	4.9	3.0
August	65.8	431.3	497.1	185.5	682.6	21.6	6.4	7.1	7.5	7.2	4.9	3.2
September	71.2	448.7	519.9	183.1	702.9	22.9	6.7	7.4	7.4	7.4	5.3	3.3
October	68.6	439.4	507.9	165.7	673.6	22.6	6.5	7.2	6.7	7.1	5.1	3.2
November	73.5	415.5	489.0	152.4	641.4	23.3	6.2	6.9	6.2	6.7	5.5	3.0
December	72.8	438.6	511.4	159.8	671.1	23.3	6.4	7.2	6.4	7.0	5.4	3.2
<b>2000</b>												
January	67.0	421.6	488.6	162.1	650.7	21.9	6.2	6.9	6.5	6.8	5.0	3.1

## UNEMPLOYED PERSONS: Trend(a)

Month	NUMBER OF UNEMPLOYED PERSONS.....					UNEMPLOYMENT RATE.....					UNEMPLOYMENT TO POPULATION RATIO	
	<i>Aged 15-19 looking for f/t work</i>	<i>Aged 20 and over looking for f/t work</i>	<i>Total looking for f/t work</i>	<i>Looking for p/t work</i>	<i>Total</i>	<i>Aged 15-19 looking for f/t work</i>	<i>Aged 20 and over looking for f/t work</i>	<i>Total looking for f/t work</i>	<i>Looking for p/t work</i>	<i>Total</i>	<i>Aged 15-19 looking for f/t work</i>	<i>Aged 20 and over looking for f/t work</i>
	'000	'000	'000	'000	'000	%	%	%	%	%	%	%
MALES												
<b>1998</b>												
November	46.6	319.2	365.8	55.8	421.7	24.4	7.2	7.9	8.4	7.9	6.9	4.8
December	44.6	314.6	359.2	55.5	414.8	23.5	7.1	7.7	8.2	7.8	6.6	4.7
<b>1999</b>												
January	43.1	310.4	353.5	56.2	409.8	22.9	7.0	7.6	8.3	7.7	6.4	4.7
February	42.1	306.1	348.2	57.6	405.8	22.5	6.9	7.5	8.4	7.6	6.2	4.6
March	41.2	301.4	342.6	59.4	402.0	22.1	6.8	7.4	8.6	7.5	6.1	4.5
April	40.3	296.5	336.9	61.2	398.1	21.6	6.6	7.2	8.8	7.4	5.9	4.4
May	39.2	292.6	331.8	63.3	395.1	21.0	6.5	7.1	9.1	7.4	5.8	4.4
June	38.2	289.6	327.7	65.1	392.9	20.3	6.5	7.0	9.4	7.3	5.6	4.3
July	37.4	287.1	324.6	66.2	390.7	19.8	6.4	6.9	9.6	7.3	5.5	4.3
August	37.4	285.2	322.6	66.2	388.7	19.6	6.3	6.9	9.6	7.2	5.5	4.2
September	38.1	283.3	321.4	65.2	386.6	19.9	6.3	6.8	9.6	7.2	5.6	4.2
October	39.3	281.7	321.1	63.6	384.7	20.4	6.3	6.8	9.4	7.2	5.7	4.2
November	40.5	280.2	320.7	61.7	382.3	20.9	6.2	6.8	9.1	7.1	5.9	4.2
December	41.5	278.5	320.0	59.9	379.9	21.4	6.2	6.8	8.8	7.1	6.0	4.1
<b>2000</b>												
January	42.5	277.3	319.8	57.7	377.5	21.9	6.2	6.8	8.5	7.0	6.2	4.1
FEMALES												
<b>1998</b>												
November	31.6	166.0	197.6	105.5	303.0	29.3	7.5	8.5	6.1	7.4	4.9	2.4
December	30.5	163.9	194.4	105.5	299.9	28.2	7.4	8.4	6.1	7.4	4.7	2.4
<b>1999</b>												
January	29.9	162.1	192.0	106.2	298.2	27.3	7.3	8.3	6.1	7.3	4.6	2.3
February	29.7	160.5	190.2	107.2	297.4	26.8	7.3	8.2	6.2	7.3	4.6	2.3
March	29.8	158.4	188.2	108.6	296.8	26.5	7.2	8.1	6.2	7.3	4.6	2.3
April	30.1	155.7	185.7	110.4	296.2	26.4	7.1	8.0	6.3	7.3	4.6	2.2
May	30.4	152.9	183.3	112.1	295.5	26.4	7.0	7.9	6.4	7.3	4.7	2.2
June	30.6	151.0	181.6	113.0	294.6	26.5	6.9	7.8	6.4	7.2	4.7	2.2
July	30.8	149.8	180.7	112.4	293.0	26.6	6.8	7.8	6.3	7.1	4.7	2.2
August	30.9	149.6	180.6	110.7	291.2	26.7	6.8	7.7	6.2	7.1	4.8	2.1
September	30.8	150.1	181.0	108.3	289.3	26.6	6.7	7.7	6.0	7.0	4.7	2.2
October	30.6	150.8	181.4	105.4	286.9	26.3	6.7	7.7	5.8	6.9	4.7	2.2
November	30.1	151.1	181.2	102.8	283.9	25.8	6.7	7.7	5.7	6.8	4.6	2.2
December	29.4	150.9	180.4	100.7	281.1	25.2	6.7	7.6	5.6	6.7	4.5	2.2
<b>2000</b>												
January	28.6	151.1	179.7	98.9	278.7	24.5	6.7	7.5	5.5	6.7	4.4	2.2
PERSONS												
<b>1998</b>												
November	78.2	485.2	563.4	161.3	724.7	26.1	7.3	8.1	6.7	7.7	5.9	3.6
December	75.2	478.4	553.6	161.0	714.7	25.2	7.2	7.9	6.7	7.6	5.7	3.5
<b>1999</b>												
January	73.0	472.5	545.5	162.4	707.9	24.5	7.1	7.8	6.7	7.5	5.5	3.5
February	71.7	466.7	538.4	164.9	703.3	24.1	7.0	7.7	6.8	7.5	5.4	3.4
March	71.0	459.8	530.8	168.0	698.8	23.8	6.9	7.6	6.9	7.4	5.4	3.4
April	70.4	452.2	522.6	171.7	694.3	23.5	6.8	7.5	7.0	7.4	5.3	3.3
May	69.6	445.5	515.1	175.5	690.6	23.1	6.7	7.4	7.1	7.3	5.2	3.3
June	68.8	440.5	509.3	178.1	687.4	22.7	6.6	7.3	7.2	7.3	5.2	3.2
July	68.3	437.0	505.2	178.5	683.8	22.4	6.5	7.2	7.2	7.2	5.1	3.2
August	68.3	434.8	503.1	176.8	679.9	22.3	6.5	7.2	7.1	7.2	5.1	3.2
September	69.0	433.4	502.4	173.5	675.9	22.4	6.4	7.1	7.0	7.1	5.2	3.2
October	69.9	432.6	502.5	169.1	671.5	22.6	6.4	7.1	6.8	7.0	5.2	3.2
November	70.6	431.3	501.8	164.4	666.3	22.7	6.4	7.1	6.6	7.0	5.3	3.1
December	70.9	429.5	500.4	160.6	660.9	22.8	6.3	7.1	6.5	6.9	5.3	3.1
<b>2000</b>												
January	71.1	428.5	499.5	156.7	656.2	22.9	6.3	7.1	6.3	6.9	5.3	3.1

(a) Trend estimates for July 1999 to December 1999 have been revised.

PERSONS AGED 15 TO 19, Education and Labour Force: **Original**—January 2000

	EMPLOYED.....			UNEMPLOYED.....			Labour force	Not in labour force	Civilian population aged 15-19	Unemployment rate	Participation rate
	Full time	Part time	Total	Looking for f/t work	Looking for p/t work	Total					
	'000	'000	'000	'000	'000	'000	'000	'000	'000	%	%
ATTENDING NEITHER SCHOOL NOR A TERTIARY EDUCATIONAL INSTITUTION FULL TIME											
Males	148.3	51.0	199.3	39.8	6.2	46.0	245.3	45.0	290.3	18.8	84.5
Females	87.6	84.1	171.7	28.8	7.9	36.7	208.3	42.9	251.3	17.6	82.9
Persons	235.9	135.1	371.0	68.6	14.1	82.7	453.7	87.9	541.6	18.2	83.8
ATTENDING A TERTIARY EDUCATIONAL INSTITUTION FULL TIME											
Males	9.9	35.6	45.5	* 4.2	7.2	11.4	56.9	32.7	89.6	20.0	63.5
Females	10.4	54.9	65.3	* 1.7	7.0	8.7	74.0	28.8	102.8	11.8	72.0
Persons	20.3	90.5	110.8	5.9	14.2	20.1	130.9	61.5	192.4	15.3	68.0
ATTENDING SCHOOL											
Males	9.0	89.0	98.0	7.0	22.2	29.2	127.2	179.5	306.8	23.0	41.5
Females	* 4.1	107.2	111.3	* 2.3	25.2	27.5	138.9	162.5	301.3	19.8	46.1
Persons	13.1	196.2	209.3	9.3	47.4	56.7	266.1	342.0	608.1	21.3	43.8
TOTAL											
Males	167.2	175.7	342.9	51.0	35.6	86.6	429.5	257.2	686.7	20.2	62.5
Females	102.2	246.1	348.3	32.7	40.2	72.9	421.2	234.2	655.4	17.3	64.3
<b>Persons</b>	<b>269.3</b>	<b>421.8</b>	<b>691.2</b>	<b>83.8</b>	<b>75.8</b>	<b>159.5</b>	<b>850.7</b>	<b>491.5</b>	<b>1 342.1</b>	<b>18.8</b>	<b>63.4</b>

LABOUR FORCE STATUS (AGED 15 & OVER), States & Territories: **Original**—January 2000

	EMPLOYED.....			UNEMPLOYED.....			Labour force	Not in labour force	Civilian population aged 15 and over	Unemp-loyment rate	Partic-ipation rate
	Full time	Part time	Total	Looking for f/t work	Looking for p/t work	Total					
	'000	'000	'000	'000	'000	'000					
MALES											
New South Wales	1 497.6	182.6	1 680.2	104.8	15.1	119.9	1 800.1	717.6	2 517.7	6.7	71.5
Victoria	1 077.8	154.8	1 232.6	78.0	13.5	91.4	1 324.0	531.6	1 855.6	6.9	71.4
Queensland	810.6	117.8	928.4	73.2	17.3	90.5	1 018.9	359.7	1 378.6	8.9	73.9
South Australia	317.4	56.7	374.1	31.3	5.5	36.8	410.9	176.9	587.8	9.0	69.9
Western Australia	453.3	65.1	518.5	38.9	7.9	46.8	565.3	173.6	738.8	8.3	76.5
Tasmania	95.6	13.8	109.4	11.4	1.2	12.6	122.0	58.2	180.2	10.3	67.7
Northern Territory	42.4	7.7	50.0	2.0	* 0.6	2.5	52.6	20.5	73.1	4.8	71.9
Australian Capital Territory	72.5	12.5	84.9	5.1	1.4	6.6	91.5	24.6	116.1	7.2	78.8
<b>Australia</b>	<b>4 367.2</b>	<b>611.0</b>	<b>4 978.2</b>	<b>344.6</b>	<b>62.5</b>	<b>407.1</b>	<b>5 385.3</b>	<b>2 062.7</b>	<b>7 448.0</b>	<b>7.6</b>	<b>72.3</b>
FEMALES											
New South Wales	776.9	480.3	1 257.2	55.3	25.4	80.7	1 337.9	1 262.8	2 600.7	6.0	51.4
Victoria	547.3	396.0	943.2	43.4	33.8	77.3	1 020.5	915.0	1 935.4	7.6	52.7
Queensland	402.7	302.7	705.5	44.5	19.6	64.1	769.6	634.2	1 403.8	8.3	54.8
South Australia	147.6	144.4	292.1	18.2	6.6	24.9	317.0	297.1	614.0	7.8	51.6
Western Australia	213.3	181.4	394.7	17.3	10.2	27.4	422.1	316.9	738.9	6.5	57.1
Tasmania	43.8	44.8	88.6	5.2	3.0	8.2	96.8	93.2	190.0	8.5	51.0
Northern Territory	26.0	11.2	37.2	2.1	* 0.7	2.7	40.0	26.6	66.6	6.9	60.0
Australian Capital Territory	50.4	26.8	77.3	2.6	1.3	3.9	81.2	41.7	122.9	4.8	66.1
<b>Australia</b>	<b>2 208.0</b>	<b>1 587.8</b>	<b>3 795.8</b>	<b>188.5</b>	<b>100.7</b>	<b>289.2</b>	<b>4 085.0</b>	<b>3 587.3</b>	<b>7 672.3</b>	<b>7.1</b>	<b>53.2</b>
PERSONS											
New South Wales	2 274.5	662.9	2 937.4	160.1	40.5	200.6	3 138.0	1 980.4	5 118.4	6.4	61.3
Victoria	1 625.1	550.7	2 175.8	121.4	47.3	168.7	2 344.5	1 446.6	3 791.1	7.2	61.8
Queensland	1 213.3	420.5	1 633.9	117.7	36.9	154.6	1 788.5	993.9	2 782.4	8.6	64.3
South Australia	465.0	201.2	666.2	49.5	12.2	61.7	727.9	473.9	1 201.8	8.5	60.6
Western Australia	666.6	246.6	913.2	56.1	18.1	74.2	987.3	490.4	1 477.8	7.5	66.8
Tasmania	139.4	58.6	198.0	16.6	4.3	20.8	218.8	151.4	370.2	9.5	59.1
Northern Territory	68.4	18.9	87.3	4.0	1.2	5.3	92.5	47.1	139.7	5.7	66.2
Australian Capital Territory	122.9	39.3	162.2	7.7	2.8	10.5	172.7	66.3	239.0	6.1	72.3
<b>Australia</b>	<b>6 575.2</b>	<b>2 198.8</b>	<b>8 773.9</b>	<b>533.2</b>	<b>163.2</b>	<b>696.3</b>	<b>9 470.3</b>	<b>5 650.0</b>	<b>15 120.3</b>	<b>7.4</b>	<b>62.6</b>

UNEMPLOYED PERSONS—New South Wales, Victoria and Queensland: **Original**

Month	NUMBER OF UNEMPLOYED PERSONS.....					UNEMPLOYMENT RATE.....					UNEMPLOYMENT TO POPULATION RATIO	
	Aged 15-19 looking for f/t work	Aged 20 and over looking for f/t work	Total looking for f/t work	Looking for p/t work	Total	Aged 15-19 looking for f/t work	Aged 20 and over looking for f/t work	Total looking for f/t work	Looking for p/t work	Total	Aged 15-19 looking for f/t work	Aged 20 and over looking for f/t work
	'000	'000	'000	'000	'000	%	%	%	%	%	%	%
NEW SOUTH WALES												
<b>1998</b>												
November	21.2	151.8	173.0	53.3	226.3	22.7	6.7	7.4	7.1	7.3	4.9	3.3
December	28.4	136.5	165.0	43.2	208.1	26.5	6.0	6.9	5.8	6.6	6.5	3.0
<b>1999</b>												
January	27.4	159.7	187.1	43.7	230.9	24.2	7.1	7.9	6.2	7.5	6.3	3.5
February	23.0	157.9	180.9	56.7	237.5	21.5	7.0	7.6	7.6	7.6	5.2	3.4
March	21.8	145.4	167.2	67.6	234.8	22.5	6.5	7.1	8.6	7.5	5.0	3.2
April	20.5	137.5	158.1	55.9	214.0	21.1	6.1	6.8	7.2	6.9	4.7	3.0
May	19.0	131.2	150.2	50.0	200.1	20.1	5.8	6.4	6.5	6.4	4.3	2.8
June	15.8	128.1	143.9	45.7	189.6	18.1	5.7	6.1	5.9	6.1	3.6	2.8
July	14.6	121.8	136.4	41.4	177.8	14.4	5.3	5.7	5.5	5.7	3.3	2.6
August	16.8	134.0	150.8	51.2	202.0	19.5	5.9	6.4	6.7	6.5	3.8	2.9
September	18.9	140.0	158.9	63.5	222.4	19.8	6.0	6.6	8.0	6.9	4.3	3.0
October	15.3	123.3	138.6	44.0	182.6	15.9	5.3	5.8	5.9	5.8	3.5	2.6
November	18.6	113.4	131.9	35.0	167.0	20.7	4.9	5.5	4.7	5.3	4.2	2.4
December	29.4	120.5	149.9	47.1	197.0	26.0	5.1	6.1	6.3	6.1	6.6	2.6
<b>2000</b>												
January	24.9	135.2	160.1	40.5	200.6	21.4	5.8	6.6	5.8	6.4	5.6	2.9
VICTORIA												
<b>1998</b>												
November	16.7	116.4	133.1	41.1	174.2	28.2	7.1	7.8	6.6	7.5	5.2	3.4
December	18.6	110.6	129.2	46.3	175.4	24.8	6.6	7.4	7.5	7.4	5.8	3.2
<b>1999</b>												
January	19.8	121.3	141.2	41.0	182.2	27.8	7.3	8.1	7.1	7.9	6.2	3.6
February	16.5	132.6	149.1	48.3	197.4	24.3	7.8	8.4	8.2	8.4	5.1	3.9
March	14.7	115.3	130.0	49.3	179.3	23.6	6.9	7.5	8.0	7.6	4.6	3.4
April	17.0	120.2	137.3	47.8	185.1	28.7	7.2	8.0	7.6	7.9	5.3	3.5
May	13.8	118.6	132.3	49.9	182.2	24.9	7.1	7.7	7.9	7.8	4.3	3.5
June	13.5	118.4	131.9	36.6	168.4	24.4	7.1	7.6	5.7	7.1	4.2	3.4
July	11.9	107.5	119.4	50.1	169.4	20.4	6.4	6.8	7.9	7.1	3.7	3.1
August	11.3	107.4	118.7	47.1	165.8	20.4	6.5	6.9	7.5	7.1	3.5	3.1
September	12.8	115.5	128.3	51.6	179.9	21.7	6.8	7.3	7.8	7.5	4.0	3.4
October	13.8	100.0	113.7	41.8	155.5	23.3	6.0	6.6	6.5	6.6	4.3	2.9
November	14.6	98.6	113.2	42.1	155.3	24.5	6.0	6.6	6.5	6.6	4.5	2.9
December	18.0	100.3	118.3	47.0	165.3	23.8	5.9	6.6	7.3	6.8	5.5	2.9
<b>2000</b>												
January	20.8	100.6	121.4	47.3	168.7	26.7	6.0	7.0	7.9	7.2	6.4	2.9
QUEENSLAND												
<b>1998</b>												
November	16.3	89.0	105.3	33.6	138.9	27.0	7.1	8.1	7.2	7.8	6.4	3.6
December	19.8	97.8	117.6	28.5	146.0	27.5	7.8	8.8	6.2	8.2	7.8	4.0
<b>1999</b>												
January	18.4	101.2	119.6	33.2	152.8	26.0	8.1	9.0	7.6	8.7	7.2	4.1
February	20.4	98.9	119.2	39.3	158.6	29.7	8.0	9.1	8.5	8.9	7.9	4.0
March	17.3	90.6	107.9	37.1	145.0	27.5	7.3	8.3	7.9	8.2	6.7	3.7
April	16.9	90.9	107.7	34.3	142.0	24.8	7.3	8.2	7.2	7.9	6.6	3.7
May	17.8	92.8	110.5	35.5	146.1	27.7	7.5	8.5	7.3	8.2	6.9	3.7
June	16.9	88.9	105.9	35.8	141.6	25.8	7.1	8.0	7.5	7.9	6.6	3.6
July	15.8	84.3	100.0	33.0	133.0	24.0	6.7	7.6	7.1	7.5	6.1	3.4
August	12.5	85.2	97.7	35.5	133.3	19.6	6.9	7.6	7.4	7.5	4.8	3.4
September	13.7	94.1	107.8	39.7	147.5	20.6	7.5	8.2	8.3	8.2	5.3	3.8
October	15.7	96.4	112.2	35.8	147.9	24.8	7.7	8.5	7.5	8.2	6.1	3.8
November	15.6	88.4	104.0	30.0	134.0	23.2	7.0	7.9	6.2	7.4	6.0	3.5
December	19.1	99.7	118.8	30.6	149.4	25.1	7.8	8.8	6.4	8.2	7.3	4.0
<b>2000</b>												
January	16.7	101.0	117.7	36.9	154.6	22.4	8.0	8.8	8.1	8.6	6.4	4.0

UNEMPLOYED PERSONS—South Australia, Western Australia and Tasmania: **Original**

Month	NUMBER OF UNEMPLOYED PERSONS.....					UNEMPLOYMENT RATE.....					UNEMPLOYMENT TO POPULATION RATIO	
	Aged 15-19 looking for f/t work	Aged 20 and over looking for f/t work	Total looking for f/t work	Looking for p/t work	Total	Aged 15-19 looking for f/t work	Aged 20 and over looking for f/t work	Total looking for f/t work	Looking for p/t work	Total	Aged 15-19 looking for f/t work	Aged 20 and over looking for f/t work
	'000	'000	'000	'000	'000	%	%	%	%	%	%	%
SOUTH AUSTRALIA												
<b>1998</b>												
November	8.2	49.7	57.9	10.1	67.9	36.0	9.9	11.0	5.1	9.4	8.2	4.6
December	7.6	48.4	56.0	10.8	66.8	31.5	9.6	10.6	5.3	9.1	7.6	4.4
<b>1999</b>												
January	8.7	53.7	62.4	12.5	74.9	35.5	10.7	11.9	6.5	10.4	8.7	4.9
February	7.0	49.3	56.2	12.6	68.9	30.0	9.8	10.7	6.4	9.5	7.0	4.5
March	8.1	44.2	52.4	13.9	66.3	36.3	8.8	10.0	6.9	9.1	8.1	4.0
April	6.1	41.8	47.9	11.3	59.2	27.2	8.5	9.3	5.6	8.3	6.1	3.8
May	7.6	39.8	47.3	16.4	63.7	31.1	8.0	9.1	8.1	8.8	7.5	3.6
June	7.4	37.2	44.6	11.5	56.0	31.9	7.6	8.7	5.5	7.8	7.3	3.4
July	5.9	34.9	40.8	13.6	54.4	24.3	7.1	7.9	6.6	7.6	5.9	3.2
August	6.8	40.8	47.6	13.4	61.0	31.0	8.3	9.3	6.5	8.5	6.8	3.7
September	5.8	39.6	45.4	15.1	60.5	26.7	8.0	8.8	7.0	8.3	5.8	3.6
October	5.9	41.7	47.6	14.9	62.4	26.8	8.5	9.2	7.0	8.6	5.8	3.8
November	7.6	37.8	45.4	10.4	55.8	32.5	7.7	8.8	4.9	7.7	7.5	3.4
December	8.3	38.1	46.4	12.8	59.2	31.4	7.5	8.7	5.9	7.9	8.2	3.5
<b>2000</b>												
January	7.8	41.7	49.5	12.2	61.7	31.6	8.5	9.6	5.7	8.5	7.7	3.8
WESTERN AUSTRALIA												
<b>1998</b>												
November	6.8	44.4	51.1	13.1	64.2	20.7	6.7	7.3	5.0	6.7	5.0	3.4
December	9.1	45.1	54.2	16.5	70.7	22.0	6.7	7.5	6.4	7.2	6.8	3.4
<b>1999</b>												
January	9.0	48.2	57.2	16.8	74.0	21.8	7.2	8.1	6.8	7.7	6.7	3.7
February	8.0	50.4	58.4	20.8	79.2	22.0	7.6	8.3	7.9	8.2	5.9	3.8
March	5.9	41.9	47.8	22.6	70.4	18.0	6.4	7.0	8.1	7.3	4.3	3.2
April	7.1	43.2	50.3	19.9	70.2	18.4	6.6	7.2	7.3	7.3	5.2	3.3
May	7.6	39.9	47.5	13.9	61.4	21.6	6.1	6.9	5.2	6.4	5.6	3.0
June	8.0	39.7	47.7	12.8	60.5	21.5	6.0	6.9	4.8	6.3	5.8	3.0
July	7.5	35.6	43.1	15.1	58.2	19.3	5.4	6.2	5.7	6.0	5.5	2.7
August	7.7	36.9	44.6	15.1	59.7	20.7	5.6	6.4	5.7	6.2	5.7	2.8
September	8.5	44.8	53.2	15.9	69.1	21.9	6.6	7.5	5.8	7.0	6.2	3.4
October	6.7	38.4	45.1	16.4	61.5	18.2	5.7	6.3	6.1	6.3	4.9	2.9
November	7.6	41.9	49.5	14.3	63.8	18.7	6.1	6.9	5.3	6.4	5.5	3.1
December	8.2	38.3	46.5	15.0	61.5	19.2	5.6	6.4	5.6	6.2	6.0	2.9
<b>2000</b>												
January	8.5	47.6	56.1	18.1	74.2	19.8	7.0	7.8	6.8	7.5	6.2	3.6
TASMANIA												
<b>1998</b>												
November	2.5	14.6	17.1	3.5	20.6	29.3	10.1	11.2	5.6	9.6	7.3	4.4
December	3.9	14.9	18.8	5.3	24.2	40.2	10.2	12.1	8.4	11.0	11.4	4.4
<b>1999</b>												
January	3.9	17.4	21.3	3.1	24.4	35.6	11.9	13.6	5.3	11.3	11.4	5.2
February	3.3	16.4	19.7	3.9	23.6	30.6	11.3	12.7	6.4	10.9	9.6	4.9
March	2.6	15.7	18.3	5.2	23.5	27.8	10.8	11.8	8.3	10.8	7.4	4.7
April	2.4	13.7	16.1	4.7	20.8	24.0	9.5	10.4	7.3	9.5	6.8	4.1
May	2.7	14.0	16.7	4.3	21.1	26.9	9.7	10.8	6.9	9.7	7.9	4.2
June	2.6	13.6	16.2	4.1	20.3	30.1	9.5	10.6	6.4	9.4	7.5	4.1
July	1.9	13.1	15.0	3.7	18.7	24.9	9.1	9.8	6.0	8.7	5.4	3.9
August	1.9	13.7	15.6	2.7	18.3	24.2	9.3	10.0	4.7	8.6	5.6	4.1
September	2.5	13.6	16.1	4.1	20.2	30.1	9.1	10.2	7.0	9.3	7.2	4.1
October	1.9	13.5	15.4	4.9	20.3	21.9	9.2	9.9	8.1	9.4	5.3	4.0
November	2.0	13.9	15.9	5.1	21.0	24.7	9.4	10.2	8.3	9.6	5.9	4.1
December	3.2	13.3	16.4	4.6	21.0	32.1	9.0	10.4	7.0	9.4	9.1	4.0
<b>2000</b>												
January	2.8	13.8	16.6	4.3	20.8	31.2	9.4	10.6	6.8	9.5	8.0	4.1

## UNEMPLOYED PERSONS—Northern Territory and Australian Capital Territory: **Original**

Month	NUMBER OF UNEMPLOYED PERSONS.....					UNEMPLOYMENT RATE.....					UNEMPLOYMENT TO POPULATION RATIO	
	Aged 15-19 looking for f/t work	Aged 20 and over looking for f/t work	Total looking for f/t work	Looking for p/t work	Total	Aged 15-19 looking for f/t work	Aged 20 and over looking for f/t work	Total looking for f/t work	Looking for p/t work	Total	Aged 15-19 looking for f/t work	Aged 20 and over looking for f/t work
	'000	'000	'000	'000	'000	%	%	%	%	%	%	%
<b>NORTHERN TERRITORY</b>												
<b>1998</b>												
November	* 0.8	2.9	3.7	* 0.9	4.7	* 20.5	4.0	4.8	* 4.4	4.7	* 5.7	2.4
December	* 0.9	1.9	2.8	* 0.5	3.3	* 21.4	2.6	3.5	* 2.6	3.3	* 6.1	1.6
<b>1999</b>												
January	* 0.5	2.7	3.2	* 1.2	4.4	* 14.1	3.7	4.2	* 6.7	4.7	* 3.4	2.2
February	* 0.8	2.4	3.2	* 0.8	4.1	* 29.4	3.2	4.2	* 3.7	4.1	* 5.9	1.9
March	* 0.8	3.3	4.1	1.5	5.6	* 26.8	4.3	5.2	6.8	5.6	* 5.8	2.6
April	* 0.3	2.8	3.1	1.0	4.1	* 12.4	3.8	4.1	4.3	4.1	* 2.3	2.3
May	* 0.4	2.2	2.6	1.4	3.9	* 14.8	3.0	3.4	5.3	3.9	* 2.6	1.8
June		7	2.7	1.0	3.7	* 15.2	3.1	3.7	4.4	3.8	* 3.5	1.8
		677.										
		4										
July	* 0.3	2.1	2.4	1.4	3.8	* 8.0	3.1	3.3	6.7	4.0	* 2.0	1.7
August	* 0.6	1.5	2.1	1.0	3.1	* 15.5	2.1	2.7	4.2	3.1	* 3.9	1.2
September	* 0.4	2.8	3.2	* 0.9	4.1	* 9.6	3.7	4.0	* 4.2	4.0	* 2.7	2.2
October	* 0.6	2.2	2.8	* 0.7	3.5	* 15.2	3.0	3.6	* 3.5	3.6	* 3.9	1.8
November	1.0	1.3	2.3	* 0.9	3.3	21.8	1.9	3.1	* 4.5	3.4	6.8	1.1
December	* 0.7	3.0	3.7	1.0	4.7	* 19.0	4.0	4.7	5.3	4.9	* 5.1	2.4
<b>2000</b>												
January	1.0	3.1	4.0	1.2	5.3	30.5	4.5	5.6	6.1	5.7	6.7	2.5
<b>AUSTRALIAN CAPITAL TERRITORY</b>												
<b>1998</b>												
November	1.1	5.8	6.9	3.0	9.9	34.8	4.9	5.7	6.9	6.0	4.6	2.7
December	1.5	4.5	6.0	3.7	9.7	31.5	3.8	4.8	8.7	5.8	6.3	2.1
<b>1999</b>												
January	1.2	6.4	7.6	3.2	10.8	30.6	5.3	6.2	7.9	6.6	5.2	3.0
February	* 0.6	6.6	7.2	4.4	11.6	* 19.3	5.4	5.7	10.1	6.9	* 2.6	3.1
March	1.0	6.0	7.0	4.6	11.7	28.9	5.1	5.8	10.2	7.0	4.1	2.8
April	* 0.9	6.1	7.1	2.8	9.8	* 26.7	5.2	5.8	6.2	5.9	* 3.9	2.9
May	* 0.7	5.4	6.1	4.1	10.2	* 20.9	4.5	4.9	9.0	6.0	* 2.8	2.6
June	* 0.6	4.3	4.9	3.3	8.3	* 22.9	3.6	4.1	7.0	4.9	* 2.7	2.0
July	* 0.6	4.9	5.5	3.2	8.7	* 13.5	4.1	4.4	7.2	5.1	* 2.6	2.3
August	* 1.0	5.1	6.1	3.6	9.7	* 25.5	4.2	4.9	8.0	5.7	* 4.3	2.4
September	1.2	4.8	6.1	3.4	9.5	31.3	4.0	4.8	7.1	5.5	5.3	2.3
October	* 0.7	5.1	5.8	3.5	9.3	* 18.1	4.1	4.5	7.5	5.3	* 3.0	2.4
November	* 0.9	5.7	6.6	3.2	9.8	* 24.0	4.6	5.1	7.0	5.6	* 3.9	2.6
December	* 0.9	5.7	6.6	2.4	9.0	* 23.9	4.5	5.1	5.4	5.2	* 3.9	2.6
<b>2000</b>												
January	1.3	6.4	7.7	2.8	10.5	27.3	5.1	5.9	6.5	6.1	5.5	3.0



## LABOUR FORCE STATUS (AGED 15 AND OVER)—New South Wales(a)

Month	SEASONALLY ADJUSTED.....					TREND.....					Civilian population aged 15 and over '000
	Employed full time '000	Total employed '000	Total unemployed '000	Unemp- loyment rate %	Partic- ipation rate %	Employed full time '000	Total employed '000	Total unemployed '000	Unemp- loyment rate %	Partic- ipation rate %	
MALES											
<b>1998</b>											
November	1 447.3	1 634.9	133.4	7.5	71.5	1 449.1	1 638.3	126.7	7.2	71.4	2 471.5
December	1 443.9	1 635.5	124.0	7.0	71.1	1 447.5	1 640.4	125.8	7.1	71.4	2 474.7
<b>1999</b>											
January	1 440.2	1 635.3	129.6	7.3	71.2	1 447.6	1 643.6	125.0	7.1	71.4	2 477.5
February	1 452.3	1 648.1	121.2	6.8	71.3	1 449.8	1 648.2	123.3	7.0	71.4	2 480.3
March	1 458.5	1 665.8	121.3	6.8	72.0	1 453.9	1 654.2	120.4	6.8	71.5	2 483.1
April	1 458.5	1 656.7	119.5	6.7	71.4	1 459.7	1 661.2	117.0	6.6	71.5	2 486.6
May	1 469.0	1 666.2	112.4	6.3	71.4	1 466.1	1 667.9	114.7	6.4	71.6	2 490.0
June	1 464.8	1 671.3	110.5	6.2	71.5	1 473.0	1 673.5	113.6	6.4	71.7	2 493.4
July	1 483.6	1 685.0	108.0	6.0	71.8	1 480.6	1 678.4	113.0	6.3	71.8	2 496.4
August	1 488.9	1 677.3	117.8	6.6	71.8	1 488.1	1 682.3	112.8	6.3	71.8	2 499.4
September	1 493.9	1 686.1	121.7	6.7	72.2	1 494.4	1 685.0	112.5	6.3	71.8	2 502.4
October	1 502.1	1 692.6	109.7	6.1	71.9	1 498.7	1 686.3	112.0	6.2	71.7	2 506.4
November	1 505.2	1 683.8	97.9	5.5	71.0	1 501.1	1 686.6	111.2	6.2	71.6	2 510.5
December	1 505.4	1 687.1	118.8	6.6	71.8	1 502.1	1 686.5	110.6	6.2	71.5	2 514.5
<b>2000</b>											
January	1 490.1	1 682.1	110.6	6.2	71.2	1 501.3	1 685.6	110.2	6.1	71.3	2 517.7
FEMALES											
<b>1998</b>											
November	730.5	1 224.5	104.7	7.9	51.9	742.5	1 246.9	93.3	7.0	52.4	2 559.6
December	745.2	1 255.9	87.5	6.5	52.4	739.7	1 246.8	92.2	6.9	52.3	2 562.5
<b>1999</b>											
January	738.4	1 249.3	85.6	6.4	52.0	737.5	1 246.9	91.8	6.9	52.2	2 565.1
February	743.7	1 257.9	87.5	6.5	52.4	736.3	1 247.4	91.8	6.9	52.2	2 567.7
March	732.3	1 237.7	98.5	7.4	52.0	736.2	1 248.1	91.8	6.9	52.1	2 570.2
April	726.9	1 244.3	96.6	7.2	52.1	737.3	1 248.9	92.1	6.9	52.1	2 573.2
May	736.0	1 252.5	91.1	6.8	52.2	739.0	1 250.3	92.3	6.9	52.1	2 576.1
June	754.6	1 257.8	89.5	6.6	52.2	741.3	1 252.8	92.1	6.8	52.1	2 579.1
July	749.6	1 257.4	83.3	6.2	51.9	744.0	1 257.0	90.9	6.7	52.2	2 582.0
August	739.2	1 255.9	95.0	7.0	52.3	747.0	1 262.0	89.2	6.6	52.3	2 584.9
September	743.3	1 264.9	96.9	7.1	52.6	750.3	1 267.2	87.2	6.4	52.3	2 587.9
October	760.6	1 281.8	78.6	5.8	52.5	754.5	1 272.6	84.9	6.3	52.4	2 591.3
November	753.5	1 271.8	77.7	5.8	52.0	759.7	1 278.1	82.2	6.0	52.4	2 594.8
December	770.3	1 285.4	81.8	6.0	52.6	765.1	1 283.1	79.6	5.8	52.4	2 598.3
<b>2000</b>											
January	775.6	1 289.7	76.7	5.6	52.5	770.7	1 287.5	77.5	5.7	52.5	2 600.7
PERSONS											
<b>1998</b>											
November	2 177.8	2 859.4	238.2	7.7	61.6	2 191.6	2 885.2	220.0	7.1	61.7	5 031.1
December	2 189.2	2 891.5	211.5	6.8	61.6	2 187.2	2 887.2	218.0	7.0	61.6	5 037.2
<b>1999</b>											
January	2 178.6	2 884.6	215.2	6.9	61.5	2 185.1	2 890.5	216.8	7.0	61.6	5 042.6
February	2 196.0	2 906.0	208.7	6.7	61.7	2 186.1	2 895.6	215.0	6.9	61.6	5 048.0
March	2 190.9	2 903.5	219.8	7.0	61.8	2 190.2	2 902.2	212.1	6.8	61.6	5 053.4
April	2 185.4	2 901.0	216.1	6.9	61.6	2 196.9	2 910.1	209.1	6.7	61.6	5 059.8
May	2 204.9	2 918.7	203.5	6.5	61.6	2 205.2	2 918.2	207.1	6.6	61.7	5 066.1
June	2 219.4	2 929.1	200.0	6.4	61.7	2 214.4	2 926.3	205.7	6.6	61.7	5 072.5
July	2 233.2	2 942.5	191.3	6.1	61.7	2 224.6	2 935.5	203.9	6.5	61.8	5 078.5
August	2 228.1	2 933.2	212.8	6.8	61.9	2 235.0	2 944.3	202.0	6.4	61.9	5 084.4
September	2 237.2	2 950.9	218.6	6.9	62.3	2 244.7	2 952.2	199.7	6.3	61.9	5 090.3
October	2 262.7	2 974.4	188.3	6.0	62.0	2 253.1	2 958.8	196.9	6.2	61.9	5 097.8
November	2 258.7	2 955.6	175.6	5.6	61.3	2 260.8	2 964.7	193.4	6.1	61.9	5 105.3
December	2 275.7	2 972.5	200.6	6.3	62.1	2 267.2	2 969.5	190.2	6.0	61.8	5 112.8
<b>2000</b>											
January	2 265.7	2 971.7	187.2	5.9	61.7	2 272.0	2 973.1	187.8	5.9	61.8	5 118.4

(a) Trend estimates for July 1999 to December 1999 have been revised.

## LABOUR FORCE STATUS (AGED 15 AND OVER)—Victoria(a)

SEASONALLY ADJUSTED.....

TREND.....

Month	SEASONALLY ADJUSTED.....					TREND.....					Civilian population aged 15 and over '000
	Employed full time '000	Total employed '000	Total unemployed '000	Unemp-loyment rate %	Partic-ipation rate %	Employed full time '000	Total employed '000	Total unemployed '000	Unemp-loyment rate %	Partic-ipation rate %	
MALES											
<b>1998</b>											
November	1 057.6	1 218.7	101.5	7.7	72.5	1 064.1	1 223.0	100.7	7.6	72.7	1 821.6
December	1 061.7	1 218.9	100.9	7.6	72.4	1 065.7	1 223.9	100.1	7.6	72.6	1 824.1
<b>1999</b>											
January	1 060.0	1 222.8	99.1	7.5	72.4	1 067.5	1 225.3	100.7	7.6	72.6	1 826.2
February	1 079.4	1 232.6	101.4	7.6	73.0	1 069.4	1 227.4	102.4	7.7	72.7	1 828.4
March	1 086.8	1 240.0	96.3	7.2	73.0	1 071.1	1 230.0	104.4	7.8	72.9	1 830.5
April	1 063.0	1 229.3	115.1	8.6	73.3	1 072.7	1 232.7	106.0	7.9	73.0	1 832.9
May	1 060.7	1 217.1	112.2	8.4	72.4	1 074.3	1 235.3	106.5	7.9	73.1	1 835.3
June	1 077.6	1 248.7	101.4	7.5	73.5	1 076.1	1 237.7	105.2	7.8	73.1	1 837.7
July	1 083.8	1 244.8	100.6	7.5	73.1	1 078.1	1 239.9	102.6	7.6	73.0	1 840.0
August	1 086.0	1 237.4	100.6	7.5	72.6	1 079.8	1 241.3	99.4	7.4	72.8	1 842.3
September	1 080.2	1 245.3	96.7	7.2	72.8	1 080.5	1 241.5	96.4	7.2	72.5	1 844.7
October	1 078.9	1 243.7	90.4	6.8	72.2	1 079.5	1 240.4	94.3	7.1	72.2	1 847.6
November	1 070.0	1 227.8	93.1	7.1	71.4	1 078.0	1 238.8	92.5	7.0	71.9	1 850.5
December	1 082.1	1 244.1	95.8	7.2	72.3	1 076.8	1 237.3	91.0	6.8	71.7	1 853.5
<b>2000</b>											
January	1 076.2	1 235.2	85.5	6.5	71.2	1 075.9	1 236.7	89.5	6.7	71.5	1 855.6
FEMALES											
<b>1998</b>											
November	525.8	939.1	80.7	7.9	53.6	532.2	943.4	79.2	7.7	53.7	1 902.9
December	533.0	942.6	74.0	7.3	53.4	532.2	941.7	76.7	7.5	53.5	1 905.3
<b>1999</b>											
January	537.7	942.9	73.0	7.2	53.3	531.7	939.9	75.0	7.4	53.2	1 907.2
February	530.8	941.0	76.9	7.6	53.3	530.5	938.5	74.1	7.3	53.0	1 909.2
March	532.1	938.8	74.8	7.4	53.0	529.0	938.0	73.8	7.3	52.9	1 911.2
April	521.6	933.0	72.2	7.2	52.5	527.2	938.5	73.9	7.3	52.9	1 913.5
May	524.2	938.4	73.7	7.3	52.8	526.3	941.1	74.3	7.3	53.0	1 915.9
June	526.8	944.6	73.0	7.2	53.1	526.5	946.0	74.8	7.3	53.2	1 918.2
July	529.2	958.1	79.5	7.7	54.0	528.2	952.8	74.8	7.3	53.5	1 920.6
August	534.5	957.6	71.5	6.9	53.5	531.2	960.2	74.5	7.2	53.8	1 922.9
September	532.6	967.2	77.0	7.4	54.2	535.0	966.8	73.8	7.1	54.0	1 925.3
October	536.3	975.9	72.7	6.9	54.4	539.2	971.7	72.8	7.0	54.2	1 928.0
November	539.8	973.2	69.3	6.6	54.0	543.5	975.4	71.9	6.9	54.2	1 930.7
December	556.8	985.4	69.2	6.6	54.5	547.7	978.0	71.3	6.8	54.3	1 933.4
<b>2000</b>											
January	551.1	971.3	74.0	7.1	54.0	551.3	979.2	70.7	6.7	54.2	1 935.4
PERSONS											
<b>1998</b>											
November	1 583.3	2 157.8	182.2	7.8	62.8	1 596.2	2 166.3	179.9	7.7	63.0	3 724.5
December	1 594.7	2 161.5	174.9	7.5	62.6	1 597.8	2 165.6	176.8	7.5	62.8	3 729.4
<b>1999</b>											
January	1 597.7	2 165.7	172.1	7.4	62.6	1 599.2	2 165.1	175.7	7.5	62.7	3 733.5
February	1 610.2	2 173.6	178.3	7.6	62.9	1 599.9	2 165.9	176.5	7.5	62.7	3 737.6
March	1 619.0	2 178.8	171.1	7.3	62.8	1 600.1	2 167.9	178.2	7.6	62.7	3 741.8
April	1 584.6	2 162.3	187.3	8.0	62.7	1 599.9	2 171.1	179.9	7.7	62.8	3 746.5
May	1 584.9	2 155.5	185.9	7.9	62.4	1 600.6	2 176.4	180.8	7.7	62.8	3 751.2
June	1 604.4	2 193.4	174.4	7.4	63.0	1 602.6	2 183.7	180.0	7.6	62.9	3 755.9
July	1 613.0	2 202.9	180.1	7.6	63.4	1 606.3	2 192.7	177.5	7.5	63.0	3 760.6
August	1 620.6	2 195.0	172.1	7.3	62.9	1 611.0	2 201.6	173.9	7.3	63.1	3 765.3
September	1 612.8	2 212.5	173.8	7.3	63.3	1 615.5	2 208.3	170.2	7.2	63.1	3 770.0
October	1 615.2	2 219.6	163.1	6.8	63.1	1 618.7	2 212.1	167.1	7.0	63.0	3 775.6
November	1 609.8	2 201.0	162.4	6.9	62.5	1 621.5	2 214.2	164.4	6.9	62.9	3 781.2
December	1 638.9	2 229.6	165.1	6.9	63.2	1 624.5	2 215.3	162.2	6.8	62.8	3 786.8
<b>2000</b>											
January	1 627.3	2 206.5	159.5	6.7	62.4	1 627.2	2 215.9	160.2	6.7	62.7	3 791.1

(a) Trend estimates for July 1999 to December 1999 have been revised.

## LABOUR FORCE STATUS (AGED 15 AND OVER)—Queensland(a)

SEASONALLY ADJUSTED.....

TREND.....

Month	SEASONALLY ADJUSTED.....					TREND.....					Civilian population aged 15 and over '000
	Employed full time '000	Total employed '000	Total unemployed '000	Unemployment rate %	Participation rate %	Employed full time '000	Total employed '000	Total unemployed '000	Unemployment rate %	Participation rate %	
<b>MALES</b>											
<b>1998</b>											
November	807.5	922.6	83.1	8.3	74.7	802.2	920.0	84.9	8.5	74.6	1 346.7
December	801.5	924.2	83.3	8.3	74.7	804.4	923.7	81.9	8.1	74.5	1 349.0
<b>1999</b>											
January	807.0	928.9	76.9	7.6	74.4	805.7	926.0	79.8	7.9	74.4	1 351.4
February	804.4	922.2	82.2	8.2	74.2	806.3	926.9	78.9	7.8	74.3	1 353.7
March	808.3	927.6	74.0	7.4	73.9	807.1	927.3	79.0	7.8	74.2	1 356.1
April	809.3	929.8	79.8	7.9	74.3	808.9	927.6	79.6	7.9	74.2	1 358.2
May	804.3	925.9	84.7	8.4	74.3	811.2	927.3	80.5	8.0	74.1	1 360.3
June	817.5	927.5	80.6	8.0	74.0	813.1	926.5	81.3	8.1	74.0	1 362.4
July	816.5	923.0	81.5	8.1	73.6	814.7	925.2	81.7	8.1	73.8	1 364.6
August	818.8	932.7	79.2	7.8	74.0	815.7	924.3	81.8	8.1	73.6	1 366.8
September	815.9	919.5	84.4	8.4	73.3	816.1	924.3	81.5	8.1	73.5	1 369.1
October	805.5	913.4	84.1	8.4	72.7	816.1	925.6	81.4	8.1	73.4	1 371.6
November	823.9	937.1	75.1	7.4	73.7	816.0	927.6	81.4	8.1	73.4	1 374.1
December	818.9	928.7	84.0	8.3	73.6	815.8	930.1	81.4	8.0	73.5	1 376.6
<b>2000</b>											
January	812.0	937.1	81.8	8.0	73.9	815.8	932.6	81.4	8.0	73.6	1 378.6
<b>FEMALES</b>											
<b>1998</b>											
November	392.2	704.0	62.3	8.1	55.9	388.0	700.5	64.1	8.4	55.8	1 371.5
December	391.6	701.6	64.2	8.4	55.7	390.5	702.1	63.8	8.3	55.7	1 373.8
<b>1999</b>											
January	396.4	707.5	66.0	8.5	56.2	392.7	704.1	63.3	8.2	55.8	1 376.2
February	386.1	700.2	58.9	7.8	55.1	394.6	706.7	62.8	8.2	55.8	1 378.7
March	395.7	704.7	63.8	8.3	55.6	395.7	709.5	62.5	8.1	55.9	1 381.2
April	404.3	719.9	60.1	7.7	56.4	395.8	712.3	62.2	8.0	56.0	1 383.3
May	391.0	718.5	63.9	8.2	56.5	395.0	714.9	62.1	8.0	56.1	1 385.4
June	396.5	714.2	66.2	8.5	56.2	393.7	716.9	62.1	8.0	56.1	1 387.5
July	393.8	716.8	60.4	7.8	55.9	392.3	718.5	62.8	8.0	56.2	1 389.7
August	383.3	720.3	57.4	7.4	55.9	391.4	720.1	63.7	8.1	56.3	1 391.9
September	391.1	719.9	65.7	8.4	56.3	391.8	722.0	64.7	8.2	56.4	1 394.1
October	399.3	726.8	72.1	9.0	57.2	393.5	724.5	65.6	8.3	56.6	1 396.6
November	392.3	725.4	65.2	8.3	56.5	395.5	726.9	66.2	8.3	56.7	1 399.1
December	396.8	733.0	67.0	8.4	57.1	397.4	728.8	66.3	8.3	56.7	1 401.6
<b>2000</b>											
January	402.7	727.5	62.4	7.9	56.3	399.5	730.2	66.4	8.3	56.7	1 403.8
<b>PERSONS</b>											
<b>1998</b>											
November	1 199.7	1 626.6	145.4	8.2	65.2	1 190.2	1 620.6	149.0	8.4	65.1	2 718.2
December	1 193.1	1 625.8	147.5	8.3	65.1	1 194.9	1 625.7	145.7	8.2	65.1	2 722.8
<b>1999</b>											
January	1 203.4	1 636.5	142.9	8.0	65.2	1 198.4	1 630.1	143.1	8.1	65.0	2 727.6
February	1 190.5	1 622.4	141.2	8.0	64.5	1 200.9	1 633.6	141.8	8.0	65.0	2 732.4
March	1 204.0	1 632.3	137.8	7.8	64.7	1 202.9	1 636.8	141.5	8.0	65.0	2 737.3
April	1 213.6	1 649.7	139.9	7.8	65.3	1 204.7	1 639.9	141.8	8.0	65.0	2 741.5
May	1 195.3	1 644.4	148.6	8.3	65.3	1 206.2	1 642.2	142.5	8.0	65.0	2 745.7
June	1 214.0	1 641.6	146.7	8.2	65.0	1 206.9	1 643.4	143.4	8.0	65.0	2 749.9
July	1 210.3	1 639.8	141.9	8.0	64.7	1 207.0	1 643.8	144.5	8.1	64.9	2 754.3
August	1 202.1	1 653.0	136.6	7.6	64.9	1 207.1	1 644.4	145.5	8.1	64.9	2 758.7
September	1 207.0	1 639.4	150.1	8.4	64.8	1 207.9	1 646.3	146.3	8.2	64.9	2 763.2
October	1 204.9	1 640.2	156.2	8.7	64.9	1 209.6	1 650.1	147.0	8.2	64.9	2 768.2
November	1 216.2	1 662.6	140.3	7.8	65.0	1 211.5	1 654.5	147.5	8.2	65.0	2 773.2
December	1 215.7	1 661.7	151.0	8.3	65.2	1 213.2	1 658.9	147.7	8.2	65.0	2 778.2
<b>2000</b>											
January	1 214.7	1 664.6	144.2	8.0	65.0	1 215.3	1 662.8	147.8	8.2	65.1	2 782.4

(a) Trend estimates for July 1999 to December 1999 have been revised.

## LABOUR FORCE STATUS (AGED 15 AND OVER)—South Australia(a)

SEASONALLY ADJUSTED.....

TREND.....

Month	SEASONALLY ADJUSTED.....					TREND.....					Civilian population aged 15 and over '000
	Employed full time '000	Total employed '000	Total unemployed '000	Unemp-loyment rate %	Partic-ipation rate %	Employed full time '000	Total employed '000	Total unemployed '000	Unemp-loyment rate %	Partic-ipation rate %	
<b>MALES</b>											
<b>1998</b>											
November	318.7	366.4	43.6	10.6	70.4	318.5	367.4	42.5	10.4	70.4	582.6
December	316.6	368.9	42.4	10.3	70.5	318.7	368.2	41.8	10.2	70.3	583.0
<b>1999</b>											
January	316.5	367.5	41.8	10.2	70.1	319.4	369.0	40.8	10.0	70.2	583.4
February	321.8	373.2	37.9	9.2	70.4	320.3	369.8	39.5	9.7	70.1	583.8
March	325.7	370.5	39.0	9.5	70.1	321.2	370.8	38.0	9.3	70.0	584.2
April	319.0	367.0	35.6	8.9	68.9	321.5	371.7	36.4	8.9	69.8	584.6
May	321.8	374.7	36.8	8.9	70.3	321.1	372.6	35.2	8.6	69.7	585.0
June	319.6	375.1	32.6	8.0	69.6	319.8	373.2	34.5	8.5	69.6	585.3
July	318.5	374.3	32.7	8.0	69.5	318.2	373.4	34.4	8.4	69.6	585.7
August	317.1	372.6	36.9	9.0	69.9	316.9	373.5	34.6	8.5	69.6	586.0
September	316.9	373.4	33.1	8.1	69.3	316.3	373.7	35.1	8.6	69.7	586.4
October	312.6	373.3	38.0	9.2	70.1	316.1	374.1	35.4	8.6	69.8	586.8
November	315.6	371.8	35.0	8.6	69.3	316.4	374.9	35.4	8.6	69.9	587.1
December	319.8	380.6	35.3	8.5	70.8	316.9	375.9	35.4	8.6	70.0	587.5
<b>2000</b>											
January	318.3	376.8	33.9	8.3	69.9	317.5	376.9	35.1	8.5	70.1	587.8
<b>FEMALES</b>											
<b>1998</b>											
November	146.4	285.4	27.0	8.6	51.3	147.2	286.0	26.2	8.4	51.2	609.2
December	146.9	289.4	24.8	7.9	51.5	147.2		25.8	8.2	51.3	609.7
<b>1999</b>											
0	146.3	286.5	26.7	8.5	51.3	147.5	287.5	25.6	8.2	51.3	610.1
February	148.9	285.6	25.8	8.3	51.0	148.2	287.2	25.7	8.2	51.2	610.5
March	148.3	288.3	25.9	8.2	51.4	149.1	286.8	25.7	8.2	51.2	610.9
April	150.7	287.1	23.9	7.7	50.9	150.1	286.6	25.7	8.2	51.1	611.3
May	153.1	285.5	27.7	8.9	51.2	150.9	286.7	25.8	8.3	51.1	611.6
June	149.1	285.6	25.7	8.3	50.9	151.4	287.2	25.9	8.3	51.2	611.9
July	151.6	289.6	24.9	7.9	51.4	151.9	288.3	26.0	8.3	51.3	612.3
August	153.9	290.6	26.2	8.3	51.7	152.4	290.1	26.0	8.2	51.6	612.6
September	151.1	292.7	26.6	8.3	52.1	152.7	292.4	25.6	8.1	51.9	613.0
October	153.2	291.0	25.9	8.2	51.7	152.8	295.0	25.1	7.8	52.2	613.3
November	153.1	299.7	23.0	7.1	52.6	152.7	297.4	24.4	7.6	52.5	613.6
December	156.0	302.4	24.2	7.4	53.2	152.3	299.6	23.8	7.4	52.7	613.8
<b>2000</b>											
January	146.7	300.7	22.4	6.9	52.6	151.6	301.4	23.2	7.2	52.9	614.0
<b>PERSONS</b>											
<b>1998</b>											
November	465.1	651.8	70.6	9.8	60.6	465.7	653.4	68.8	9.5	60.6	1 191.8
December	463.5	658.3	67.1	9.3	60.8	466.0	655.4	67.6	9.4	60.6	1 192.6
<b>1999</b>											
January	462.8	654.0	68.4	9.5	60.5	466.9	656.5	66.5	9.2	60.6	1 193.5
February	470.6	658.9	63.8	8.8	60.5	468.5	657.0	65.2	9.0	60.5	1 194.3
March	474.0	658.8	64.9	9.0	60.6	470.3	657.5	63.7	8.8	60.3	1 195.1
April	469.6	654.1	59.6	8.3	59.7	471.6	658.3	62.1	8.6	60.2	1 195.8
May	474.9	660.2	64.5	8.9	60.6	471.9	659.3	61.0	8.5	60.2	1 196.6
June	468.7	660.7	58.3	8.1	60.1	471.2	660.4	60.4	8.4	60.2	1 197.3
July	470.1	663.9	57.5	8.0	60.2	470.1	661.7	60.4	8.4	60.3	1 198.0
August	470.9	663.2	63.1	8.7	60.6	469.3	663.6	60.6	8.4	60.4	1 198.7
September	468.0	666.0	59.7	8.2	60.5	469.0	666.1	60.7	8.3	60.6	1 199.4
October	465.9	664.3	63.9	8.8	60.7	468.9	669.1	60.4	8.3	60.8	1 200.0
November	468.7	671.5	58.1	8.0	60.8	469.0	672.3	59.9	8.2	61.0	1 200.7
December	475.8	683.0	59.5	8.0	61.8	469.2	675.6	59.2	8.1	61.2	1 201.3
<b>2000</b>											
January	465.1	677.4	56.4	7.7	61.1	469.1	678.3	58.3	7.9	61.3	1 201.8

(a) Trend estimates for July 1999 to December 1999 have been revised.

## LABOUR FORCE STATUS (AGED 15 AND OVER)—Western Australia(a)

Month	SEASONALLY ADJUSTED.....					TREND.....					Civilian population aged 15 and over '000
	Employed full time '000	Total employed '000	Total unemployed '000	Unemp-loyment rate %	Partic-ipation rate %	Employed full time '000	Total employed '000	Total unemployed '000	Unemp-loyment rate %	Partic-ipation rate %	
<b>MALES</b>											
<b>1998</b>											
November	445.8	507.6	41.7	7.6	76.2	446.9	509.0	41.9	7.6	76.4	721.1
December	447.6	510.4	42.8	7.7	76.6	446.7	509.8	41.5	7.5	76.3	722.5
<b>1999</b>											
January	446.8	510.4	40.9	7.4	76.2	446.5	510.3	41.0	7.4	76.2	723.8
February	444.7	508.0	40.9	7.5	75.7	445.9	510.5	40.1	7.3	75.9	725.1
March	446.2	512.2	37.3	6.8	75.6	445.1	510.5	39.0	7.1	75.6	726.4
April	447.5	513.9	39.4	7.1	76.0	444.2	510.3	38.0	6.9	75.4	727.7
May	440.5	508.6	36.0	6.6	74.7	443.8	510.1	37.4	6.8	75.1	729.0
June	442.6	507.9	38.7	7.1	74.9	444.1	510.5	37.5	6.8	75.0	730.2
July	445.4	510.5	36.8	6.7	74.8	445.5	511.7	38.1	6.9	75.2	731.4
August	448.4	515.3	37.2	6.7	75.4	447.9	513.9	38.9	7.0	75.5	732.5
September	449.2	514.7	41.6	7.5	75.8	450.8	516.7	39.7	7.1	75.8	733.7
October	455.7	522.7	41.8	7.4	76.8	453.6	519.5	40.3	7.2	76.1	735.1
November	456.3	521.3	41.8	7.4	76.5	455.7	521.7	40.6	7.2	76.4	736.5
December	459.9	525.3	36.6	6.5	76.1	457.2	523.5	40.8	7.2	76.5	737.9
<b>2000</b>											
January	454.6	522.6	42.6	7.5	76.5	458.2	524.7	41.0	7.3	76.6	738.8
<b>FEMALES</b>											
<b>1998</b>											
November	203.0	385.3	26.4	6.4	57.0	202.6	385.4	26.4	6.4	57.0	722.5
December	205.2	385.2	26.3	6.4	56.9	202.3	384.3	27.0	6.6	56.8	723.8
<b>1999</b>											
January	203.8	382.9	26.5	6.5	56.5	201.5	383.2	27.7	6.7	56.7	725.0
February	200.0	382.1	28.9	7.0	56.6	200.6	382.8	28.3	6.9	56.6	726.2
March	195.3	383.3	28.5	6.9	56.6	200.2	383.2	28.5	6.9	56.6	727.4
April	201.1	382.3	32.6	7.9	56.9	200.4	384.5	28.1	6.8	56.6	728.6
May	199.7	384.6	26.1	6.4	56.3	201.4	386.4	27.3	6.6	56.7	729.7
June	206.9	393.1	23.3	5.6	57.0	203.0	388.5	26.5	6.4	56.8	730.8
July	206.7	393.4	25.2	6.0	57.2	205.2	391.0	25.9	6.2	57.0	731.9
August	206.1	389.6	25.9	6.2	56.7	207.5	393.5	25.7	6.1	57.2	733.0
September	203.7	394.1	28.1	6.7	57.5	209.5	396.1	25.7	6.1	57.5	734.1
October	213.6	397.9	25.2	6.0	57.5	211.3	398.5	25.7	6.1	57.7	735.4
November	219.9	406.2	25.9	6.0	58.6	212.8	400.7	25.5	6.0	57.9	736.7
December	211.6	403.1	23.4	5.5	57.8	213.8	402.5	25.1	5.9	58.0	738.0
<b>2000</b>											
January	211.4	401.3	24.9	5.9	57.7	214.5	404.1	24.6	5.7	58.0	738.9
<b>PERSONS</b>											
<b>1998</b>											
November	648.7	892.9	68.1	7.1	66.6	649.5	894.3	68.3	7.1	66.7	1 443.6
December	652.8	895.6	69.1	7.2	66.7	649.0	894.0	68.5	7.1	66.5	1 446.3
<b>1999</b>											
January	650.5	893.3	67.4	7.0	66.3	647.9	893.5	68.7	7.1	66.4	1 448.8
February	644.7	890.1	69.8	7.3	66.1	646.4	893.2	68.4	7.1	66.3	1 451.3
March	641.5	895.6	65.8	6.8	66.1	645.2	893.7	67.5	7.0	66.1	1 453.9
April	648.6	896.2	72.0	7.4	66.5	644.7	894.8	66.1	6.9	66.0	1 456.3
May	640.2	893.2	62.1	6.5	65.5	645.1	896.5	64.7	6.7	65.9	1 458.7
June	649.5	901.0	61.9	6.4	65.9	647.1	899.0	64.0	6.6	65.9	1 461.0
July	652.0	903.9	62.0	6.4	66.0	650.7	902.7	64.0	6.6	66.1	1 463.3
August	654.6	904.8	63.1	6.5	66.0	655.4	907.5	64.6	6.6	66.3	1 465.6
September	652.9	908.8	69.7	7.1	66.7	660.3	912.8	65.4	6.7	66.6	1 467.8
October	669.3	920.6	67.1	6.8	67.2	664.8	918.0	66.0	6.7	66.9	1 470.5
November	676.2	927.5	67.7	6.8	67.6	668.4	922.5	66.1	6.7	67.1	1 473.2
December	671.6	928.4	60.0	6.1	67.0	671.0	926.1	65.9	6.6	67.2	1 475.9
<b>2000</b>											
January	666.0	923.9	67.5	6.8	67.1	672.6	928.7	65.7	6.6	67.3	1 477.8

(a) Trend estimates for July 1999 to December 1999 have been revised.

## LABOUR FORCE STATUS (AGED 15 AND OVER)—Tasmania(a)

SEASONALLY ADJUSTED.....

TREND.....

Month	SEASONALLY ADJUSTED.....					TREND.....					Civilian population aged 15 and over '000
	Employed full time '000	Total employed '000	Total unemployed '000	Unemployment rate %	Participation rate %	Employed full time '000	Total employed '000	Total unemployed '000	Unemployment rate %	Participation rate %	
MALES											
<b>1998</b>											
November	94.9	109.2	13.3	10.8	67.9	93.2	108.3	14.2	11.6	67.9	180.4
December	93.9	108.6	13.0	10.7	67.4	92.7	107.9	14.2	11.6	67.7	180.4
<b>1999</b>											
January	91.4	106.4	15.1	12.4	67.4	92.2	107.6	14.5	11.8	67.6	180.4
February	89.9	106.6	15.4	12.6	67.6	91.8	107.5	14.8	12.1	67.8	180.4
March	91.1	107.3	15.4	12.6	68.1	91.9	107.9	14.9	12.1	68.1	180.4
April	93.9	109.5	13.9	11.3	68.4	92.4	108.7	14.6	11.8	68.4	180.4
May	93.7	109.4	14.7	11.9	68.9	93.5	109.6	14.0	11.4	68.6	180.3
June	94.3	111.3	13.3	10.7	69.2	94.7	110.3	13.4	10.8	68.6	180.3
July	94.8	110.4	12.6	10.3	68.2	95.8	110.6	12.9	10.4	68.5	180.2
August	98.1	110.7	11.3	9.3	67.7	96.5	110.6	12.6	10.2	68.4	180.2
September	97.4	110.3	13.1	10.6	68.5	96.9	110.4	12.5	10.2	68.3	180.2
October	96.5	109.8	12.4	10.1	67.8	97.0	110.3	12.5	10.2	68.1	180.2
November	97.6	110.0	13.7	11.1	68.7	96.9	110.1	12.5	10.2	68.0	180.2
December	96.5	111.0	11.9	9.7	68.2	96.6	109.9	12.4	10.1	67.9	180.2
<b>2000</b>											
January	94.9	109.0	11.7	9.7	67.0	96.2	109.8	12.3	10.1	67.8	180.2
FEMALES											
<b>1998</b>											
November	41.7	85.5	8.1	8.7	49.4	41.8	86.1	8.2	8.7	49.8	189.4
December	41.0	85.1	9.3	9.8	49.8	42.0	85.9	8.1	8.6	49.6	189.5
<b>1999</b>											
January	42.7	86.0	7.7	8.2	49.4	42.4	85.8	8.0	8.5	49.5	189.5
February	42.7	87.0	6.9	7.4	49.5	42.9	85.8	7.9	8.4	49.4	189.6
March	44.1	85.2	7.8	8.4	49.0	43.4	85.8	7.7	8.3	49.3	189.6
April	43.6	85.8	7.9	8.4	49.4	43.8	85.7	7.6	8.1	49.2	189.7
May	45.3	85.0	8.0	8.6	49.0	44.1	85.7	7.4	8.0	49.1	189.7
June	43.4	86.6	7.5	8.0	49.6	44.4	85.7	7.3	7.9	49.0	189.7
July	43.5	85.3	6.4	7.0	48.3	44.6	85.8	7.3	7.8	49.1	189.8
August	45.1	86.4	7.1	7.6	49.3	44.7	86.2	7.3	7.8	49.2	189.8
September	46.0	86.9	7.7	8.1	49.8	44.6	86.6	7.4	7.9	49.5	189.8
October	44.5	86.2	7.7	8.2	49.5	44.3	87.3	7.6	8.0	50.0	189.8
November	43.8	88.1	8.2	8.5	50.7	43.9	88.0	7.7	8.1	50.4	189.9
December	42.4	88.9	7.4	7.7	50.7	43.5	88.7	7.8	8.1	50.8	189.9
<b>2000</b>											
January	43.1	90.2	7.8	8.0	51.6	43.1	89.4	7.9	8.1	51.2	190.0
PERSONS											
<b>1998</b>											
November	136.6	194.8	21.4	9.9	58.5	135.0	194.4	22.4	10.3	58.6	369.8
December	134.9	193.7	22.3	10.3	58.4	134.7	193.8	22.3	10.3	58.4	369.9
<b>1999</b>											
January	134.1	192.4	22.8	10.6	58.2	134.6	193.4	22.4	10.4	58.3	369.9
February	132.5	193.6	22.3	10.3	58.4	134.8	193.3	22.6	10.5	58.4	370.0
March	135.3	192.5	23.2	10.8	58.3	135.3	193.7	22.6	10.4	58.4	370.0
April	137.5	195.3	21.8	10.0	58.7	136.3	194.4	22.2	10.2	58.5	370.0
May	138.9	194.4	22.7	10.5	58.7	137.6	195.3	21.5	9.9	58.6	370.0
June	137.7	197.9	20.9	9.5	59.1	139.1	196.0	20.7	9.6	58.6	370.0
July	138.2	195.6	19.0	8.9	58.0	140.4	196.4	20.2	9.3	58.5	370.0
August	143.1	197.1	18.4	8.5	58.3	141.2	196.8	19.9	9.2	58.6	370.0
September	143.4	197.2	20.8	9.5	58.9	141.5	197.1	19.9	9.2	58.7	370.0
October	141.0	196.0	20.1	9.3	58.4	141.3	197.5	20.1	9.2	58.8	370.0
November	141.4	198.1	21.9	9.9	59.4	140.8	198.1	20.2	9.3	59.0	370.0
December	138.9	199.9	19.4	8.8	59.2	140.1	198.6	20.2	9.2	59.1	370.1
<b>2000</b>											
January	138.0	199.2	19.5	8.9	59.1	139.2	199.2	20.2	9.2	59.3	370.2

(a) Trend estimates for July 1999 to December 1999 have been revised.

## LABOUR FORCE STATUS (AGED 15 AND OVER)—Northern Territory(a)

TREND.....

Month	Employed full time '000	Total employed '000	Total unemployed '000	Unemp- loyment rate %	Partic- ipation rate %	Civilian population aged 15 and over '000
MALES						
<b>1998</b>						
November	46.6	53.3	2.5	4.6	78.1	71.5
December	46.7	53.6	2.4	4.3	78.2	71.6
<b>1999</b>						
January	46.9	54.0	2.4	4.2	78.5	71.8
February	47.0	54.3	2.3	4.1	78.7	72.0
March	46.9	54.4	2.3	4.1	78.6	72.1
April	46.7	54.3	2.2	3.9	78.1	72.3
May	46.4	54.0	2.1	3.7	77.4	72.5
June	46.3	53.8	1.9	3.5	76.6	72.7
July	46.4	53.6	1.8	3.3	76.1	72.8
August	46.6	53.4	1.8	3.2	75.8	72.9
September	46.6	53.3	1.9	3.4	75.6	72.9
October	46.3	53.0	2.0	3.7	75.4	73.0
November	45.9	52.5	2.2	4.0	75.0	73.0
December	45.3	52.0	2.3	4.3	74.5	73.0
<b>2000</b>						
January	44.7	51.6	2.4	4.5	73.9	73.1
FEMALES						
<b>1998</b>						
November	28.5	40.9	1.5	3.4	65.1	65.1
December	28.4	41.3	1.6	3.7	65.7	65.2
<b>1999</b>						
January	28.2	41.5	1.7	3.8	66.0	65.3
February	27.7	41.5	1.7	4.0	66.0	65.5
March	27.1	41.3	1.9	4.3	65.7	65.7
April	26.6	41.1	2.0	4.6	65.4	65.8
May	26.3	40.9	2.1	4.8	65.1	65.9
June	26.3	40.8	2.1	4.9	64.9	66.0
July	26.6	40.8	2.1	4.8	64.8	66.1
August	27.1	40.8	2.0	4.7	64.7	66.1
September	27.5	40.7	2.0	4.6	64.5	66.2
October	27.8	40.5	2.0	4.6	64.1	66.3
November	27.9	40.2	2.0	4.7	63.5	66.4
December	27.9	39.9	2.0	4.9	63.0	66.5
<b>2000</b>						
January	27.8	39.6	2.1	5.1	62.6	66.6
PERSONS						
<b>1998</b>						
November	75.1	94.2	4.0	4.1	71.9	136.5
December	75.2	94.8	4.0	4.0	72.3	136.8
<b>1999</b>						
January	75.1	95.5	4.0	4.0	72.5	137.1
February	74.7	95.8	4.1	4.1	72.7	137.5
March	74.0	95.7	4.2	4.2	72.5	137.8
April	73.3	95.3	4.2	4.2	72.1	138.1
May	72.7	94.9	4.2	4.2	71.6	138.4
June	72.6	94.5	4.1	4.1	71.1	138.7
July	73.0	94.3	3.9	4.0	70.7	138.9
August	73.6	94.2	3.8	3.9	70.5	139.0
September	74.1	94.0	3.8	3.9	70.3	139.2
October	74.1	93.5	4.0	4.1	70.0	139.3
November	73.7	92.7	4.2	4.3	69.5	139.4
December	73.1	91.9	4.4	4.5	69.0	139.5
<b>2000</b>						
January	72.4	91.1	4.6	4.8	68.5	139.7

(a) Trend estimates for July 1999 to December 1999 have been revised. Estimates for the most recent three months may be subject to significant revisions as data for later months become available.

## LABOUR FORCE STATUS (AGED 15 AND OVER)—Australian Capital Territory(a)

TREND.....

Month	Employed full time '000	Total employed '000	Total unemployed '000	Unemp- loyment rate %	Partic- ipation rate %	Civilian population aged 15 and over '000
MALES						
<b>1998</b>						
November	68.8	81.3	6.2	7.1	77.0	113.7
December	69.0	81.4	6.0	6.9	76.8	113.9
<b>1999</b>						
January	69.1	81.6	5.9	6.7	76.6	114.1
February	69.1	81.8	5.8	6.6	76.6	114.3
March	69.0	82.0	5.8	6.6	76.7	114.4
April	68.9	82.2	5.9	6.7	76.8	114.5
May	68.9	82.4	6.0	6.8	77.1	114.6
June	69.1	82.9	6.0	6.8	77.5	114.7
July	69.5	83.5	6.0	6.7	77.9	114.9
August	70.1	84.2	5.9	6.5	78.3	115.1
September	70.6	84.9	5.7	6.3	78.6	115.3
October	71.1	85.4	5.6	6.2	78.9	115.4
November	71.5	85.9	5.5	6.0	79.1	115.5
December	71.9	86.1	5.5	6.0	79.2	115.7
<b>2000</b>						
January	72.1	86.4	5.4	5.9	79.0	116.1
FEMALES						
<b>1998</b>						
November	46.4	74.1	4.2	5.3	64.5	121.4
December	46.8	74.5	4.1	5.2	64.7	121.5
<b>1999</b>						
January	47.2	74.9	4.1	5.2	65.0	121.6
February	47.3	75.1	4.2	5.3	65.2	121.7
March	47.3	75.2	4.3	5.4	65.3	121.8
April	47.2	75.3	4.2	5.3	65.2	121.9
May	47.5	75.6	4.0	5.0	65.3	122.0
June	48.0	76.2	3.8	4.8	65.6	122.0
July	48.8	76.8	3.8	4.7	66.0	122.1
August	49.5	77.4	3.9	4.8	66.5	122.2
September	50.1	77.9	4.1	5.0	67.0	122.3
October	50.4	78.2	4.2	5.1	67.3	122.4
November	50.5	78.5	4.3	5.2	67.6	122.6
December	50.4	78.8	4.3	5.1	67.7	122.7
<b>2000</b>						
January	50.2	79.0	4.2	5.1	67.7	122.9
PERSONS						
<b>1998</b>						
November	115.2	155.5	10.4	6.3	70.6	235.1
December	115.8	155.9	10.1	6.1	70.5	235.4
<b>1999</b>						
January	116.3	156.4	10.0	6.0	70.6	235.7
February	116.4	156.9	10.0	6.0	70.7	235.9
March	116.3	157.2	10.0	6.0	70.8	236.2
April	116.1	157.5	10.0	6.0	70.9	236.4
May	116.3	158.0	10.0	5.9	71.0	236.6
June	117.1	159.0	9.9	5.8	71.3	236.8
July	118.3	160.3	9.8	5.7	71.8	237.1
August	119.6	161.6	9.8	5.7	72.2	237.3
September	120.8	162.8	9.8	5.7	72.6	237.6
October	121.5	163.6	9.9	5.7	72.9	237.9
November	122.0	164.4	9.8	5.6	73.2	238.1
December	122.3	164.9	9.7	5.6	73.3	238.3
<b>2000</b>						
January	122.3	165.4	9.6	5.5	73.2	239.0

(a) Trend estimates for July 1999 to December 1999 have been revised. Estimates for the most recent three months may be subject to significant revisions as data for later months become available.



## EXPLANATORY NOTES

### INTRODUCTION

**1** This publication contains preliminary estimates of the civilian labour force derived from the Labour Force Survey component of the monthly population survey. Estimates for the current month are preliminary and subject to revision. Revised estimates for the current month and more detailed estimates will be published in *Labour Force, Australia* (Cat. no. 6203.0).

### MONTHLY POPULATION SURVEY

**2** The population survey is based on a multi-stage area sample of private dwellings (currently about 30,000 houses, flats, etc.) and a list sample of non-private dwellings (hotels, motels, etc.), and covers about 0.5% of the population of Australia. The information is obtained from the occupants of selected dwellings by specially trained interviewers. The interviews are generally conducted during the two weeks beginning on the Monday between the 6th and 12th of each month. The information obtained relates to the week before the interview (i.e. the reference week).

### TELEPHONE INTERVIEWING

**3** The ABS has introduced the use of telephone interviewing into the Labour Force Survey. Households selected for the Labour Force Survey are interviewed each month for 8 months, with one eighth of the sample being replaced each month. The first interview is conducted face-to-face. Subsequent interviews are conducted by telephone (if acceptable to the respondent). Telephone interviewing was phased in for each new sample group from August 1996 to February 1997.

**4** During the period of implementation, the new method produced different estimates than would have been obtained under the old methodology. The effect peaked in November 1996, when it is estimated that the published estimate of total employment was about 36,000 to 48,000 lower than would have been measured under the old methodology. The effect dissipated over the final months of implementation and was no longer discernible from February 1997. Therefore, the estimates for February 1997 and onwards are directly comparable to estimates for periods prior to August 1996.

### SCOPE OF SURVEY

**5** The Labour Force Survey includes all persons aged 15 and over except members of the permanent defence forces, certain diplomatic personnel of overseas governments customarily excluded from census and estimated populations, overseas residents in Australia, and members of non-Australian defence forces (and their dependants) stationed in Australia.

### COVERAGE

**6** In the Labour Force Survey, coverage rules are applied which aim to ensure that each person is associated with only one dwelling, and hence has only one chance of selection. The coverage rules are necessarily a balance between theoretical and operational considerations. Nevertheless, the chance of a person being enumerated at two separate dwellings in the survey is considered to be negligible.

### POPULATION BENCHMARKS

**7** Labour Force Survey estimates are calculated in such a way as to add up to independent estimates of the civilian population aged 15 and over (population benchmarks). From February 1999, labour force estimates have been compiled using benchmarks based on the results of the 1996 Census of Population and Housing. Small revisions were made to many of the historical estimates from January 1995 to January 1999.

### REVISION OF SERIES

**8** From April 1986, the definition of employed persons was changed to include persons who worked without pay between 1 and 14 hours per week in a family business or on a farm (i.e. contributing family workers). For further information, see paragraphs 36 and 37 of the Explanatory Notes to the February 1987 issue of *Labour Force, Australia* (Cat. no. 6203.0).

## EXPLANATORY NOTES

### SURVEY SAMPLE REDESIGN

**9** The Labour Force Survey sample was last reselected using information collected in the 1996 Census of Population and Housing.

**10** The bulk of the new sample was phased in over the period September 1997 to April 1998, with one eighth of this portion of the sample being introduced every month. The remainder of the sample (about 15% of the total), which covers less settled areas of Australia and non-private dwellings was rotated in full for New South Wales, Victoria, Tasmania, Northern Territory and Australian Capital Territory in September 1997, and for Queensland, South Australia and Western Australia in October 1997. Such a pattern of implementation means that any changes to labour force estimates due to differences between the two samples, or any other influences, was spread over the eight months.

**11** For further details, see *Information Paper: Labour Force Survey Sample Design* (Cat. no. 6269.0).

### RELIABILITY OF ESTIMATES

**12** Two types of error are possible in an estimate based on a sample survey: sampling error and non-sampling error.

*Sampling error* occurs because a sample, rather than the entire population, is surveyed. One measure of the likely difference resulting from not including all dwellings in the survey is given by the standard error. There are about two chances in three that a sample estimate will differ by less than one standard error from the figure that would have been obtained if all dwellings had been included in the survey, and about nineteen chances in twenty that the difference will be less than two standard errors. Standard errors of estimates for the latest month and of estimates of movements since the previous month are shown on pages 30 and 31. Standard errors of other estimates and other movements may be determined by using information in the Technical Notes in *Labour Force, Australia* (Cat. no. 6203.0).

*Non sampling error* arises from inaccuracies in collecting, recording and processing the data. Every effort is made to minimise reporting error by the careful design of questionnaires, intensive training and supervision of interviewers, and efficient data processing procedures.

### SEASONAL ADJUSTMENT AND TREND ESTIMATION

**13** Seasonally adjusted series are published in Tables 2, 5 and 12 to 17. Seasonal factors are reviewed annually to take account of each additional year's original data. The results of the latest review were used to compile the revised seasonally adjusted and trend estimates given in this publication. Information about the method of adjustment and revised seasonally adjusted and trend estimates for all months from January 1997 were published in a feature article in the February 1999 issue of *Labour Force, Australia* (Cat. no. 6203.0).

**14** Seasonal adjustment is a means of removing the estimated effects of normal seasonal variation from the series so that the effects of other influences on the series can be more clearly recognised. Seasonal adjustment does not aim to remove the irregular or non-seasonal influences which may be present in any particular month. This means that month-to-month movements of the seasonally adjusted estimates may not be reliable indicators of trend behaviour. For example, irregular factors unrelated to the trend account for more than half the seasonally adjusted movement with the following frequency:

Employment: 5 in 10 monthly movements

Unemployment: 7 in 10 monthly movements

Unemployment rate: 7 in 10 monthly movements

Participation rate: 9 in 10 monthly movements.

## EXPLANATORY NOTES

### SEASONAL ADJUSTMENT AND TREND ESTIMATION *continued*

**15** The smoothing of seasonally adjusted series reduces the impact of the irregular component of the seasonally adjusted series, and creates trend estimates. These trend estimates are derived by applying a 13-term Henderson-weighted moving average to all months except the last six. The last six monthly trend estimates are obtained by applying surrogates of the Henderson average to the seasonally adjusted series. Trend series are used to analyse the underlying behaviour of the series over time. These are published in tables 3, 6 and 12 to 19.

**16** While this smoothing technique enables estimates to be produced for the latest month, it does result in revisions to the most recent months as additional observations become available. Generally, subsequent revisions become smaller, and after three months have a negligible impact on the series. There will also be revisions as a result of the annual review of seasonal factors.

**17** Trend estimates are published for the Northern Territory in table 18 and for the Australian Capital Territory in table 19. Unadjusted series for the two Territories have shown, historically, a high degree of variability, which can lead to considerable revisions to the seasonally adjusted estimates after each annual seasonal factor re-analysis. Seasonally adjusted estimates are not currently published for the two Territories. The most recent six months trend estimates are subject to revision. For the three most recent months, the revision may be relatively large. Inferences about trends drawn from smoothed seasonally adjusted (trend) estimates for months earlier than the latest three months are unlikely to be affected by month to month revisions. They may be affected by revision resulting from the annual re-analysis of seasonal factors.

**18** For further information, see *A Guide to Interpreting Time Series—Monitoring 'Trends': an Overview* (Cat. no. 1348.0) or contact the Assistant Director, Time Series Analysis on (02) 6252 6345.

### RELATED PUBLICATIONS

**19** Users may also wish to refer to *Labour Force, Australia* (Cat. no. 6203.0). This publication contains a detailed list of related publications which are available from ABS Bookshops.

**20** Current publications produced by the ABS are listed in the *Catalogue of Publications and Products* (Cat. no. 1101.0). The ABS also issues, on Tuesdays and Fridays, a *Release Advice* (Cat. no. 1105.0) which lists publications to be released in the next few days. The Catalogue and Release Advice are available from any ABS office.

### UNPUBLISHED STATISTICS

**21** As well as the statistics included in this and related publications, the ABS may have other relevant unpublished data available. Inquiries should be made to Michael Johnson on 02 6252 6525 or to any ABS office.

### EFFECTS OF ROUNDING

**22** Estimates have been rounded and discrepancies may occur between sums of the component items and totals.

**23** Estimates of movement shown in this publication are obtained by taking the difference of unrounded estimates. The movement estimate is then rounded to one decimal place. Therefore where a discrepancy occurs between the reported movement and the difference of the rounded estimates, the reported movement will be more accurate.

### SYMBOLS AND OTHER USAGES

- \* subject to sampling variability too high for most practical uses. See the Technical Notes in Cat. no. 6203.0 for more details.
- .. not applicable
- r revised
- pts percentage points

## G L O S S A R Y

<b>Actively looking for work</b>	Includes writing, telephoning or applying in person to an employer for work; answering an advertisement for a job; checking factory noticeboards or the touchscreens at the Centrelink offices; being registered with Centrelink as a jobseeker; checking or registering with any other employment agency; advertising or tendering for work; and contacting friends or relatives.
<b>Attending school</b>	Persons aged 15 to 19 enrolled full time at secondary or high schools in the reference week.
<b>Attending tertiary educational institution full time</b>	Persons aged 15 to 24 enrolled full time at a TAFE college, university, or other educational institution in the reference week.
<b>Employed</b>	Persons aged 15 and over who, during the reference week: <ul style="list-style-type: none"><li>■ worked for one hour or more for pay, profit, commission or payment in kind in a job or business, or on a farm (comprising employees, employers and own account workers); or</li><li>■ worked for one hour or more without pay in a family business or on a farm (i.e. contributing family workers); or</li><li>■ were employees who had a job but were not at work and were:<ul style="list-style-type: none"><li>■ on paid leave,</li><li>■ on leave without pay for less than four weeks up to the end of the reference week,</li><li>■ stood down without pay because of bad weather or plant breakdown at their place of employment for less than four weeks up to the end of the reference week,</li><li>■ on strike or locked out,</li><li>■ on workers' compensation and expected to be returning to their job, or</li><li>■ receiving wages or salary while undertaking full-time study; or</li></ul></li><li>■ were employers, own account workers or contributing family workers who had a job, business or farm, but were not at work.</li></ul>
<b>Full-time workers</b>	Employed persons who usually worked 35 hours or more a week (in all jobs) and those who, although usually working less than 35 hours a week, worked 35 hours or more during the reference week
<b>Labour force</b>	For any group, persons who were employed or unemployed, as defined.
<b>Labour force status</b>	A classification of the civilian population aged 15 and over into employed, unemployed or not in the labour force, as defined. The definitions conform closely to the international standard definitions adopted by the International Conferences of Labour Statisticians.
<b>Not in the labour force</b>	Persons who were not in the categories employed or unemployed as defined.
<b>Participation rate</b>	For any group, the labour force expressed as a percentage of the civilian population aged 15 and over in the same group.
<b>Part-time workers</b>	Employed persons who usually worked less than 35 hours a week and who did so during the reference week.
<b>Seasonally adjusted series</b>	A time series of estimates with the estimated effects of normal seasonal variation removed. See Explanatory Notes 13 to 14 for more detail.
<b>Trend series</b>	A smoothed seasonally adjusted series of estimates. See Explanatory Notes 15 to 17 for more detail.

## G L O S S A R Y

<b>Unemployed</b>	Persons aged 15 and over who were not employed during the reference week, and: <ul style="list-style-type: none"><li>■ had actively looked for full-time or part-time work at any time in the four weeks up to the end of the reference week and:<ul style="list-style-type: none"><li>■ were available for work in the reference week, or would have been available except for temporary illness (i.e. lasting for less than four weeks to the end of the reference week), or</li><li>■ were waiting to start a new job within four weeks from the end of the reference week and would have started in the reference week if the job had been available then; or</li></ul></li><li>■ were waiting to be called back to a full-time or part-time job from which they had been stood down without pay for less than four weeks up to the end of the reference week (including the whole of the reference week) for reasons other than bad weather or plant breakdown.</li></ul>
<b>Unemployed looking for first full-time job</b>	Unemployed persons looking for full-time work (as defined above) who had never worked full time for two weeks or more
<b>Unemployed looking for full-time work</b>	Unemployed persons who actively looked for full-time work, or were to resume a full-time job from which they had been stood down.
<b>Unemployed looking for part-time work</b>	Unemployed persons who had actively looked for part-time work only, or were to resume a part-time job from which they had been stood down.
<b>Unemployment rate</b>	For any group, the number of unemployed persons expressed as a percentage of the labour force in the same group.
<b>Unemployment to population ratio</b>	For any group, the number of unemployed persons expressed as a percentage of the civilian population in the same group.

## STANDARD ERRORS

The estimates in this publication are based on information gained from the occupants of a sample survey of dwellings. Because the entire population is not surveyed, the published estimates are subject to sampling error. The most common way of quantifying such sampling error is to calculate the standard error for the published estimate or statistic.

### LEVEL ESTIMATES

To illustrate, let us say the published level estimate for employed persons aged 15 to 19 is 500,000. The calculated standard error in this case is 8,700. The standard error is then used to interpret the level estimate of 500,000. For instance, the standard error of 8,700 indicates that:

- There are approximately two chances in three that the real value falls within the range 491,300 to 508,700 (500,000 + or - 8,700)
- There are approximately nineteen chances in twenty that the real value falls within the range 482,600 to 517,400 (500,000 + or - 17,400).

The real value in this case is the result we would obtain if we could enumerate the total population.

The following tables show the standard errors for this month's level estimates.

	EMPLOYED.....			UNEMPLOYED.....			Labour force	Not in labour force	Unemployment rate	Participation rate
	Full time	Part time	Total	Looking for f/t work	Looking for p/t work	Total				
	'000	'000	'000	'000	'000	'000				
NSW	18.5	9.5	21.7	5.3	3.4	5.8	22.6	17.0	0.2	0.4
Vic.	13.7	7.9	16.2	4.2	3.0	4.8	16.9	12.9	0.2	0.4
Qld	10.8	7.1	12.1	4.3	2.6	4.8	12.5	10.0	0.3	0.4
SA	5.0	3.6	5.7	2.0	1.2	2.2	5.9	5.0	0.3	0.5
WA	5.4	3.9	6.0	2.3	1.5	2.6	6.1	4.9	0.3	0.4
Tas.	1.8	1.3	2.1	0.8	0.5	0.9	2.2	1.9	0.4	0.6
NT	1.2	0.8	1.3	0.4	0.3	0.5	1.4	1.1	0.5	1.0
ACT	1.8	1.1	2.0	0.6	0.4	0.6	2.1	1.4	0.4	0.9
Males	21.2	9.4	23.0	7.5	4.0	8.0	24.2	15.2	0.1	0.3
Females	15.6	13.7	19.7	6.0	4.8	7.0	20.4	19.1	0.2	0.3
Persons	27.9	15.6	35.6	8.9	5.7	9.9	38.3	25.0	0.1	0.3

	NUMBER OF UNEMPLOYED PERSONS.....					UNEMPLOYMENT RATE.....				
	Aged 15-19 looking for f/t work	Aged 20 and over looking for f/t work	Total looking for f/t work	Looking for p/t work	Total	Aged 15-19 looking for f/t work	Aged 20 and over looking for f/t work	Total looking for f/t work	Looking for p/t work	Total
	'000	'000	'000	'000	'000	pts	pts	pts	pts	pts
NSW	2.9	5.1	5.3	3.4	5.8	2.5	0.2	0.2	0.5	0.2
Vic.	2.3	3.9	4.2	3.0	4.8	2.9	0.2	0.2	0.5	0.2
Qld	1.9	4.0	4.3	2.6	4.8	2.5	0.3	0.3	0.6	0.3
SA	1.0	1.9	2.0	1.2	2.2	3.9	0.4	0.4	0.5	0.3
WA	1.1	2.2	2.3	1.5	2.6	2.6	0.3	0.3	0.6	0.3
Tas.	0.4	0.8	0.8	0.5	0.9	4.6	0.5	0.5	0.8	0.4
NT	0.2	0.4	0.4	0.3	0.5	7.8	0.6	0.6	1.3	0.5
ACT	0.3	0.5	0.6	0.4	0.6	6.1	0.4	0.4	0.9	0.4
Males	3.7	7.1	7.5	4.0	8.0	1.7	0.2	0.2	0.6	0.1
Females	3.0	5.6	6.0	4.8	7.0	2.3	0.2	0.3	0.3	0.2
Persons	4.5	8.3	8.9	5.7	9.9	1.3	0.1	0.1	0.2	0.1

## STANDARD ERRORS *continued*

### MOVEMENT ESTIMATES

The following example illustrates how to use the standard error to interpret a movement estimate. Let us say that one month the published level estimate for females employed part time in Australia is 1,390,000; the next month the published level estimate is 1,400,000. The calculated standard error for the movement estimate is 13,000. The standard error is then used to interpret the published movement estimate of 10,000. For instance, the standard error of 13,000 indicates that:

- There are approximately two chances in three that the real movement over the two month period falls within the range -3,000 to 23,000 (10,000 + or - 13,000)
- There are approximately nineteen chances in twenty that the real movement falls within the range -16,000 to 36,000 (10,000 + or - 26,000).

The following tables show the standard errors for this month's movement estimates.

	EMPLOYED.....			UNEMPLOYED.....			Labour force	Not in labour force	Unemployment rate	Participation rate
	Full time	Part time	Total	Looking for f/t work	Looking for p/t work	Total				
	'000	'000	'000	'000	'000	'000				
NSW	10.0	6.7	10.9	4.0	2.7	4.4	11.1	9.5	0.1	0.2
Vic.	7.5	5.3	8.4	3.1	2.2	3.5	8.6	7.2	0.1	0.2
Qld	6.7	4.7	7.5	3.0	2.0	3.3	7.7	6.2	0.2	0.3
SA	3.1	2.3	3.6	1.4	0.9	1.5	3.7	3.1	0.2	0.3
WA	3.9	2.8	4.3	1.7	1.2	1.9	4.4	3.5	0.2	0.3
Tas.	1.2	0.9	1.4	0.6	0.4	0.6	1.5	1.3	0.3	0.4
NT	1.1	0.6	1.2	0.4	0.2	0.4	1.2	0.9	0.4	0.9
ACT	1.0	0.7	1.1	0.4	0.3	0.5	1.1	0.8	0.3	0.5
Males	14.1	7.0	14.7	5.7	3.1	6.0	15.1	10.7	0.1	0.2
Females	11.1	10.0	13.5	4.6	3.7	5.3	13.8	13.0	0.1	0.2
Persons	16.3	11.2	18.1	6.6	4.3	7.3	18.6	15.3	0.1	0.1

	NUMBER OF UNEMPLOYED PERSONS.....					UNEMPLOYMENT RATE.....				
	Aged 15-19 looking for f/t work	Aged 20 and over looking for f/t work	Total looking for f/t work	Looking for p/t work	Total	Aged 15-19 looking for f/t work	Aged 20 and over looking for f/t work	Total looking for f/t work	Looking for p/t work	Total
	'000	'000	'000	'000	'000	pts	pts	pts	pts	pts
NSW	2.3	3.8	4.0	2.7	4.4	2.0	0.2	0.2	0.4	0.1
Vic.	1.7	2.9	3.1	2.2	3.5	2.2	0.2	0.2	0.4	0.1
Qld	1.6	2.8	3.0	2.0	3.3	2.1	0.2	0.2	0.4	0.2
SA	0.8	1.3	1.4	0.9	1.5	2.9	0.3	0.3	0.4	0.2
WA	0.9	1.6	1.7	1.2	1.9	2.1	0.2	0.2	0.4	0.2
Tas.	0.3	0.6	0.6	0.4	0.6	3.4	0.4	0.4	0.6	0.3
NT	0.2	0.3	0.4	0.2	0.4	6.5	0.5	0.5	1.1	0.4
ACT	0.2	0.4	0.4	0.3	0.5	4.9	0.3	0.3	0.7	0.3
Males	2.9	5.4	5.7	3.1	6.0	1.3	0.1	0.1	0.5	0.1
Females	2.6	4.3	4.6	3.7	5.3	1.9	0.2	0.2	0.2	0.1
Persons	3.5	6.2	6.6	4.3	7.3	1.0	0.1	0.1	0.2	0.1

# WHAT IF...? REVISIONS TO TREND ESTIMATES

## EFFECT OF NEW SEASONALLY ADJUSTED ESTIMATES ON TREND ESTIMATES

Each time new seasonally adjusted estimates become available, trend estimates are revised (see paragraphs 13 and 14 of Explanatory Notes).

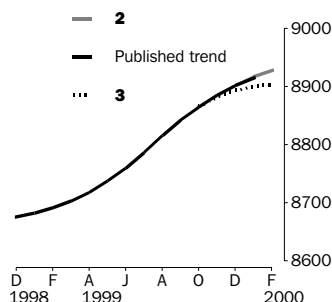
### TREND REVISIONS

The examples in the tables below show four illustrative scenarios and the consequent revisions to previous trend estimates of employment and unemployment rate.

- 1** The February seasonally adjusted estimate is the same as the January estimate.
- 2** The February seasonally adjusted estimate is higher than the January estimate by:
  - +0.32% for employment
  - +2.05% for the unemployment rate
- 3** The February seasonally adjusted estimate is lower than the January estimate by:
  - -0.32% for employment
  - -2.05% for the unemployment rate
- 4** The February seasonally adjusted estimate results in a revised January trend estimate which is identical to the new February trend estimate.

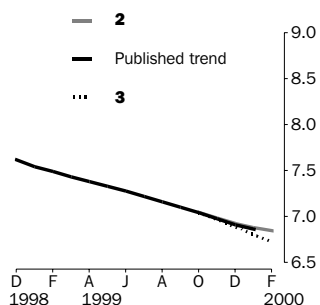
The percentage changes of 0.32% and 2.05% were chosen because they represent the average absolute monthly percentage changes in employment and the unemployment rate respectively.

### EMPLOYMENT ('000)



	TREND AS PUBLISHED	WHAT IF NEXT MONTH'S SEASONALLY ADJUSTED ESTIMATE IS:			
		<b>1</b>	<b>2</b>	<b>3</b>	<b>4</b>
		8 900.9 <i>i.e. the same as Jan 2000</i>	8 929.2 <i>i.e. rises by 0.32%</i>	8 872.5 <i>i.e. falls by 0.32%</i>	8 854.0 <i>i.e. same trend for Jan &amp; Feb</i>
1999					
November	8 885.1	8 883.5	8 884.8	8 882.2	8 881.4
December	8 901.8	8 897.9	8 902.1	8 893.7	8 891.0
2000					
January	8 914.9	8 908.8	8 916.8	8 900.9	8 895.8
February (new)	—	8 915.5	8 927.4	8 903.6	8 895.8

### UNEMPLOYMENT RATE (%)



	TREND AS PUBLISHED	WHAT IF NEXT MONTH'S SEASONALLY ADJUSTED ESTIMATE IS:			
		<b>1</b>	<b>2</b>	<b>3</b>	<b>4</b>
		6.8 <i>i.e. the same as Jan 2000</i>	7.0 <i>i.e. rises by 2.05%</i>	6.7 <i>i.e. falls by 2.05%</i>	7.2 <i>i.e. same trend for Jan &amp; Feb</i>
1999					
November	7.0	7.0	7.0	7.0	7.0
December	6.9	6.9	6.9	6.9	7.0
2000					
January	6.9	6.8	6.9	6.8	7.0
February (new)	—	6.8	6.8	6.7	7.0









## SELF-HELP ACCESS TO STATISTICS

- CPI INFOLINE* For current and historical Consumer Price Index data, call 1902 981 074 (call cost 75c per minute).
- DIAL-A-STATISTIC* For the latest figures for National Accounts, Balance of Payments, Labour Force, Average Weekly Earnings, Estimated Resident Population and the Consumer Price Index call 1900 986 400 (call cost 75c per minute).
- INTERNET* [www.abs.gov.au](http://www.abs.gov.au)
- LIBRARY* A range of ABS publications is available from public and tertiary libraries Australia-wide. Contact your nearest library to determine whether it has the ABS statistics you require.

## WHY NOT SUBSCRIBE?

- PHONE* +61 1300 366 323
- FAX* +61 03 9615 7848

## CONSULTANCY SERVICES

ABS offers consultancy services on a user pays basis to help you access published and unpublished data. Data that is already published and can be provided within 5 minutes is free of charge. Statistical methodological services are also available. Please contact:

<i>INQUIRIES</i>	<i>City</i>	<i>By phone</i>	<i>By fax</i>
	Canberra	02 6252 6627	02 6207 0282
	Sydney	02 9268 4611	02 9268 4668
	Melbourne	03 9615 7755	03 9615 7798
	Brisbane	07 3222 6351	07 3222 6283
	Perth	08 9360 5140	08 9360 5955
	Adelaide	08 8237 7400	08 8237 7566
	Hobart	03 6222 5800	03 6222 5995
	Darwin	08 8943 2111	08 8981 1218

*POST* Client Services, ABS, PO Box 10, Belconnen ACT 2616

*EMAIL* [client.services@abs.gov.au](mailto:client.services@abs.gov.au)



2620200001003  
ISSN 1031-038X

RRP \$18.00